

## EMC REPORT

**Applicant:** SHENZHEN WLINK TECHNOLOGY CO.,LIMITED  
**Address of Applicant:** 319, YiBen Electronic Business Building, NO.1063 ChaGuang Road, XiLi, NanShan District, ShenZhen, China  
**Manufacturer/Factory:** SHENZHEN WLINK TECHNOLOGY CO.,LIMITED  
**Address of Manufacturer/ Factory:** 319, YiBen Electronic Business Building, NO.1063 ChaGuang Road, XiLi, NanShan District, ShenZhen, China  
**Equipment Under Test (EUT)**

**Product Name:** Industrial 3G/4G Cellular Router

**Model No.:** WL-R520

**Applicable standards:** ETSI EN 301 489-1 V2.2.0 (2017-03) Draft  
ETSI EN 301 489-17 V3.2.0 (2017-03) Draft  
ETSI EN 301 489-52 V1.1.0 (2016-11) Draft  
EN 55032:2015  
EN 55024:2010/A1:2015  
EN 61000-3-2:2014  
EN 61000-3-3:2013

**Date of sample receipt:** May 25, 2017

**Date of Test:** May 25, 2017 – June 15, 2017

**Date of report issue:** June 15, 2017

**Test Result :** PASS \*

\*In the configuration tested, the EUT complied with the standards specified above.

The CE mark as shown below can be used, under the responsibility of the manufacturer, after completion of an EC Declaration of Conformity and compliance with all relevant EC Directives. The protection requirements with respect to electromagnetic compatibility contained in Directive 2014/50/EU are considered.



**Robinson Lo**  
**Laboratory Manager**



This results shown in this test report refer only to the sample(s) tested, this test report cannot be reproduced, except in full, without prior written permission of the company. The report would be invalid without specific stamp of test institute and the signatures of compiler and approver.

## 2 Version

Version No.	Date	Description
00	June 15, 2017	Original

**Prepared By:**

*Edward Pan*

**Date:**

*June 15, 2017*

**Project Engineer**

**Check By:**

*Andy Wu*

**Date:**

*June 15, 2017*

**Reviewer**

## 3 Contents

	Page
1 COVER PAGE .....	1
2 VERSION .....	2
3 CONTENTS .....	3
4 TEST SUMMARY .....	4
5 GENERAL INFORMATION .....	5
5.1 GENERAL DESCRIPTION OF EUT .....	5
5.2 OPERATING MODES .....	6
5.3 DESCRIPTION OF SUPPORT UNITS .....	6
5.4 TEST FACILITY .....	6
5.5 TEST LOCATION .....	6
5.6 DEVIATION FROM STANDARDS .....	6
5.7 ABNORMALITIES FROM STANDARD CONDITIONS .....	6
5.8 OTHER INFORMATION REQUESTED BY THE CUSTOMER .....	6
6 EQUIPMENT USED DURING TEST .....	7
7 EMC REQUIREMENTS SPECIFICATION IN ETSI EN 301 489-17/EN 301 489-52/EN 55032 .....	10
7.1 EMI (EMISSION) .....	10
7.1.1 Radiated Emission .....	10
7.1.2 Conducted Emissions .....	16
7.1.3 Harmonics Test Results .....	25
7.1.4 Flicker Test Results .....	25
7.2 IMMUNITY .....	26
7.2.1 Electrostatic Discharge .....	27
7.2.2 Radiated Immunity .....	29
7.2.3 Radio frequency common mode .....	31
7.2.4 Electrical Fast Transients .....	33
7.2.5 Surge .....	35
7.2.6 Voltage Dip and Voltage Interruptions .....	37
8 TEST SETUP PHOTO .....	39
9 EUT CONSTRUCTIONAL DETAILS .....	43

## 4 Test Summary

EMI Test				
Test Item	Test Requirement	Test Method	Application	Result
Radiated Emission	ETSI EN 301 489-17 ETSI EN 301 489-52 EN 55032	ETSI EN301 489-1 EN 55032	Enclosure	Pass
Conducted Emission	ETSI EN 301 489-17 ETSI EN 301 489-52 EN 55032	ETSI EN301 489-1 EN 55032	AC port	Pass
Harmonic Current Emissions	ETSI EN 301 489-17 ETSI EN 301 489-52 EN 55032	ETSI EN301 489-1 EN 55032	AC port	N/A
Voltage Fluctuations and Flicker	ETSI EN 301 489-17 ETSI EN 301 489-52 EN 55032	ETSI EN301 489-1 EN 55032	AC port	Pass
EMS Test				
ESD (Electrostatic Discharge)	ETSI EN 301 489-17 ETSI EN 301 489-52 EN 55032	EN 61000-4-2	Enclosure	Pass
Radiated Immunity, 80MHz to 2.7 GHz	ETSI EN 301 489-17 ETSI EN 301 489-52 EN 55032	EN 61000-4-3	Enclosure	Pass
EFT (Electrical Fast Transients)	ETSI EN 301 489-17 ETSI EN 301 489-52 EN 55032	EN 61000-4-4	AC port	Pass
Surge Immunity	ETSI EN 301 489-17 ETSI EN 301 489-52 EN 55032	EN 61000-4-5	AC port	Pass
Injected Currents 150kHz to 80MHz	ETSI EN 301 489-17 ETSI EN 301 489-52 EN 55032	EN 61000-4-6	AC port	Pass
Voltage Dips and Interruptions	ETSI EN 301 489-17 ETSI EN 301 489-52 EN 55032	EN 61000-4-11	AC port	Pass

**Remark:**

Pass: The EUT complies with the essential requirements in the standard.

N/A: not applicable.

## 5 General Information

### 5.1 General Description of EUT

Product Name:	Industrial 3G/4G Cellular Router
Model No.:	WL-R520
Operation Frequency:	UTRA-FDD: BAND 1, BAND 8 E-UTRA: BAND 1, BAND 3, BAND 7, BAND 8, BAND 20 WIFI: 2412MHz ~ 2472MHz
Modulation Type:	UTRA-FDD & E-UTRA: QPSK, 16QAM WIFI: DSSS, OFDM
Antenna Type:	External Antenna
Antenna Gain:	UTRA-FDD & E-UTRA WIFI:2dBi
Power Supply:	AC-DCAdapter Model:TS-A018-120015AZ Input:100-240V, 50/60Hz, 0.6A Output: DC 12.0V, 1.5A

## 5.2 Operating Modes

Operating mode	Detail description
LAN mode	Keep the EUT in LAN mode.
WiFi mode	Keep the EUT in charging and play internet information by wifi network.
Traffic mode (UTRA-FDD;GSM)	Link+Adapter (The EUT shall be commanded to operate at maximum transmit power.)
Idle mode (UTRA-FDD GSM)	Idle+Adapter (The EUT was registered in the mentioned band.)
Traffic mode (E-UTRA)	Link+Adapter (The EUT shall be commanded to operate at maximum transmit power.)
Idle mode (E-UTRA)	Idle+Adapter (The EUT was registered in the mentioned band.)

## 5.3 Description of Support Units

Ancillary equipment	Manufacturer	Model
Universal radio communication tester	Rohde & Schwarz	CMU200
Wideband Radio Communication Tester	Rohde & Schwarz	CMW500

## 5.4 Test Facility

<p>The test facility is recognized, certified, or accredited by the following organizations:</p> <ul style="list-style-type: none"> <li>● <b>FCC —Registration No.: 600491</b> Global United Technology Services Co., Ltd., Shenzhen EMC Laboratory has been registered and fully described in a report filed with the (FCC) Federal Communications Commission. The acceptance letter from the FCC is maintained in files. Registration 600491, June 22, 2016</li> <li>● <b>Industry Canada (IC)—Registration No.:9079A-2</b> The 3m Semi-anechoic chamber of Global United Technology Services Co., Ltd. Has been Registered by Certification and Engineering Bureau of Industry Canada for radio equipment testing with Registration No.: 9079A-2, August 15, 2016.</li> </ul>
--

## 5.5 Test Location

RI test was performed at:
China Shenzhen Academy of Metrology and Quality Inspection, Metrology and Quality Inspection building, Central Section of LongZhu Road, Nan Shan, Shenzhen, China.
All other tests were performed at:
Global United Technology Services Co., Ltd. No. 301-309, 3/F., Jinyuan Business Building, No.2, Laodong Industrial Zone, Xixiang Road, Baoan District, Shenzhen, Guangdong, China Tel: 0755-27798480; Fax: 0755-27798960

## 5.6 Deviation from Standards

None.
-------

## 5.7 Abnormalities from Standard Conditions

None.
-------

## 5.8 Other Information Requested by the Customer

None.
-------

## 6 Equipment Used during Test

Radiated Emission:						
Item	Test Equipment	Manufacturer	Model No.	Inventory No.	Cal.Date (mm-dd-yy)	Cal.Due date (mm-dd-yy)
1	3m Semi- Anechoic Chamber	ZhongYu Electron	9.2(L)*6.2(W)* 6.4(H)	GTS250	July. 03 2015	July. 02 2020
2	Control Room	ZhongYu Electron	6.2(L)*2.5(W)* 2.4(H)	GTS251	N/A	N/A
3	EMI Test Receiver	Rohde & Schwarz	ESU26	GTS203	June. 29 2016	June. 28 2017
4	BiConiLog Antenna	SCHWARZBECK MESS-ELEKTRONIK	VULB9163	GTS214	June. 29 2016	June. 28 2017
5	Double -ridged waveguide horn	SCHWARZBECK MESS-ELEKTRONIK	9120D-829	GTS208	June. 29 2016	June. 28 2017
6	Horn Antenna	ETS-LINDGREN	3160	GTS217	June. 29 2016	June. 28 2017
7	EMI Test Software	AUDIX	E3	N/A	N/A	N/A
8	Coaxial Cable	GTS	N/A	GTS213	June. 29 2016	June. 28 2017
9	Coaxial Cable	GTS	N/A	GTS211	June. 29 2016	June. 28 2017
10	Coaxial cable	GTS	N/A	GTS210	June. 29 2016	June. 28 2017
11	Coaxial Cable	GTS	N/A	GTS212	June. 29 2016	June. 28 2017
12	Amplifier(100kHz-3GHz)	HP	8347A	GTS204	June. 29 2016	June. 28 2017
13	Amplifier(2GHz-20GHz)	HP	8349B	GTS206	June. 29 2016	June. 28 2017
14	Amplifier (18-26GHz)	Rohde & Schwarz	AFS33-18002 650-30-8P-44	GTS218	June. 29 2016	June. 28 2017
15	Band filter	Amindeon	82346	GTS219	June. 29 2016	June. 28 2017
16	Constant temperature and humidity box	Oregon Scientific	BA-888	GTS248	June. 29 2016	June. 28 2017
17	D.C. Power Supply	Instek	PS-3030	GTS232	June. 29 2016	June. 28 2017
18	Universal radio communication tester	Rohde & Schwarz	CMU200	GTS235	June. 29 2016	June. 28 2017
19	Wideband Radio Communication Tester	Rohde & Schwarz	CMW500	GTS588	June. 29 2016	June. 28 2017
20	Splitter	Agilent	11636B	GTS237	June. 29 2016	June. 28 2017

<b>Conducted Emission:</b>						
Item	Test Equipment	Manufacturer	Model No.	Inventory No.	Cal.Date (mm-dd-yy)	Cal.Due date (mm-dd-yy)
1	Shielding Room	ZhongYu Electron	7.3(L)x3.1(W)x2.9(H)	GTS252	May.16 2014	May.15 2019
2	EMI Test Receiver	R&S	ESCI 7	GTS552	June. 29 2016	June. 28 2017
3	Coaxial Switch	ANRITSU CORP	MP59B	GTS225	June. 29 2016	June. 28 2017
4	Artificial Mains Network	SCHWARZBECK MESS	NSLK8127	GTS226	June. 29 2016	June. 28 2017
5	Coaxial Cable	GTS	N/A	GTS227	N/A	N/A
6	EMI Test Software	AUDIX	E3	N/A	N/A	N/A
7	Thermo meter	KTJ	TA328	GTS233	June. 29 2016	June. 28 2017

<b>ESD:</b>						
Item	Test Equipment	Manufacturer	Model No.	Inventory No.	Cal.Date (mm-dd-yy)	Cal.Due date (mm-dd-yy)
1	ESD Simulator	KIKUSUI	KES4021A	GTS242	June. 29 2016	June. 28 2017
2	Thermo meter	KTJ	TA328	GTS243	June. 29 2016	June. 28 2017

<b>Conducted Immunity:</b>						
Item	Test Equipment	Manufacturer	Model No.	Inventory No.	Cal.Date (mm-dd-yy)	Cal.Due date (mm-dd-yy)
1	Signal Generator	SCHLODER	CDG-6000-25	GTS553	June. 29 2016	June. 28 2017
2	CDN	SCHLODER	CDN-M2+3	GTS554	June. 29 2016	June. 28 2017
3	ATT	SCHLODER	ATT-6DB-100	GTS556	June. 29 2016	June. 28 2017

<b>Harmonic/ Flicker:</b>						
Item	Test Equipment	Manufacturer	Model No.	Inventory No.	Cal.Date (mm-dd-yy)	Cal.Due date (mm-dd-yy)
1	HARMONIC/FLICKER ANALYZER	KIKUSUI	KHA1000	GTS235	June. 29 2016	June. 28 2017
2	AC POWER SUPPLY	KIKUSUI	PCR4000LE	GTS236	June. 29 2016	June. 28 2017
3	LINE IMPEDANCE NETWORK	KIKUSUI	LIN1020JF	GTS237	June. 29 2016	June. 28 2017
4	Thermo meter	KTJ	TA328	GTS256	June. 29 2016	June. 28 2017

<b>EFT, Surge, Voltage dips and Interruption:</b>						
Item	Test Equipment	Manufacturer	Model No.	Inventory No.	Cal.Date (mm-dd-yy)	Cal.Due date (mm-dd-yy)
1	EMTEST system	EMTEST	UCS500N	GTS239	June. 29 2016	June. 28 2017
2	Thermo meter	KTJ	TA328	GTS238	June. 29 2016	June. 28 2017



<b>Radiated Immunity:</b>						
Item	Test Equipment	Manufacturer	Model No.	Serial NO.	Cal.Date (mm-dd-yy)	Cal.DueDate (mm-dd-yy)
1	Signal Generator	Rohde & Schwarz	SMT03	100059	Jan. 17 2016	Jan. 16 2017
2	Power Amplifier	AR	150W1000	300999	Jan. 17 2016	Jan. 16 2017
3	Power Amplifier	AR	25S1G4AM1	305993	Jan. 17 2016	Jan. 16 2017
4	Power Amplifier	AR	150A220M6	305965	Jan. 17 2016	Jan. 16 2017
5	Broadband antenna	CHASE	CBL6111C	2576	Jan. 17 2016	Jan. 16 2017
6	Horn Antenna	AR	AT4002A	2783	Jan. 17 2016	Jan. 16 2017

<b>General used equipment:</b>						
Item	Test Equipment	Manufacturer	Model No.	Inventory No.	Cal.Date (mm-dd-yy)	Cal.Due date (mm-dd-yy)
1	Humidity/ Temperature Indicator	Shanghai	ZJ1-2B	GTS243	June.29 2016	June. 28 2017
2	Barometer	ChangChun	DYM3	GTS255	June. 29 2016	June. 28 2017

## 7 EMC Requirements Specification in ETSI EN 301 489-17/EN 301 489-52/EN 55032

### 7.1 EMI (Emission)

#### 7.1.1 Radiated Emission

Test Requirement:	ETSI EN 301 489-17/-52, EN 55032				
Test Method:	ETSI EN 301 489-1 and EN55016-2-3				
Test Frequency Range:	30MHz to 6GHz				
Test site:	Measurement Distance: 3m				
Receiver setup:	Frequency	Detector	RBW	VBW	Remark
	30MHz-1GHz	Quasi-peak	100kHz	300kHz	Quasi-peak Value
	Above 1GHz	Peak	1MHz	3MHz	Peak Value
AV		1MHz	3MHz	Average Value	
Limit:	Frequency	Limit (dBuV/m @3m)		Remark	
	30MHz-230MHz	40.00		Quasi-peak Value	
	230MHz-1GHz	47.00		Quasi-peak Value	
	1GHz-3GHz	50.00		Average Value	
		70.00		Peak Value	
3GHz-6GHz	54.00		Average Value		
	74.00		Peak Value		
Test setup:	Below 1GHz				
Test setup:	Above 1GHz				

<p>Test Procedure:</p>	<p>■ <b>From 30MHz to 1GHz:</b></p> <ol style="list-style-type: none"> <li>1. The radiated emissions test was conducted in a semi-anechoic chamber.</li> <li>2. The tabletop EUT was placed upon a non-metallic table 0.8m above the ground reference plane. And for floor-standing arrangement, the EUT was placed on the horizontal ground reference plane, but separated from metallic contact with the ground reference plane by 0.1m of insulation.</li> <li>3. Before final measurements of radiated emissions, a pre-scan was performed in the spectrum mode with the peak detector to find out the maximum emissions spectrum plots of the EUT.</li> <li>4. The frequencies of maximum emission were determined in the final radiated emissions measurement. At each frequency, the EUT was rotated 360°, and the antenna was raised and lowered from 1 to 4 meters in order to determine the maximum disturbance. Measurements were performed for both horizontal and vertical antenna polarization.</li> </ol> <p>■ <b>Above 1GHz:</b></p> <ol style="list-style-type: none"> <li>1. The radiated emissions test was conducted in a fully-anechoic chamber.</li> <li>2. The tabletop EUT was placed upon a non-metallic table 0.8m above the ground reference plane. And for floor-standing arrangement, the EUT was placed on the horizontal ground reference plane, but separated from metallic contact with the ground reference plane by 0.1m of insulation.</li> <li>3. Before final measurements of radiated emissions, a pre-scan was performed in the spectrum mode with the peak detector to find out the maximum emission spectrum plots of the EUT.</li> <li>4. The frequencies of maximum emission were determined in the final radiated emissions measurement. At each frequency, the EUT was rotated 360°, and the antenna was raised and lowered from 1 to 4 meters in order to determine the maximum disturbance. Measurements were performed for both horizontal and vertical antenna polarization.</li> </ol>
<p>Test environment:</p>	<p>Temp.: 25 °C Humid.: 50% Press.: 1 010mbar</p>
<p>Measurement Record:</p>	<p>Uncertainty: ±4.5dB</p>
<p>Test Instruments:</p>	<p>Refer to section 6.0 for details</p>
<p>Test mode:</p>	<p>Refer to section 5.3 for details. Only show test data of the worse mode on the test report.</p>
<p>Test results:</p>	<p>Pass</p>

**Remark:**

1. Final Level =Receiver Read level + Antenna Factor + Cable Loss – Preamplifier Factor
2. The emission levels of other frequencies are very lower than the limit and not show in test report.

**Measurement Data**

**Below 1GHz**

WIFI Mode

Frequency (MHz)	Read Level (dBuV)	Antenna Factor (dB/m)	Cable Loss (dB)	Preamp Factor (dB)	Level (dBuV/m)	Limit Line (dBuV/m)	Over Limit (dB)	Polarity
31.62	40.80	14.32	0.57	30.09	25.60	40.00	-14.40	Vertical
50.06	37.76	15.25	0.77	30.00	23.78	40.00	-16.22	Vertical
121.98	48.71	12.19	1.38	29.56	32.72	40.00	-7.28	Vertical
148.96	50.89	10.26	1.56	29.41	33.30	40.00	-6.70	Vertical
194.45	51.24	12.56	1.81	29.22	36.39	40.00	-3.61	Vertical
292.06	50.34	14.89	2.32	29.95	37.60	47.00	-9.40	Vertical
49.36	32.37	15.29	0.77	30.00	18.43	40.00	-21.57	Horizontal
62.87	32.11	13.50	0.88	29.90	16.59	40.00	-23.41	Horizontal
133.15	46.98	10.67	1.46	29.49	29.62	40.00	-10.38	Horizontal
175.65	49.84	11.36	1.72	29.30	33.62	40.00	-6.38	Horizontal
245.95	55.58	14.08	2.10	29.61	42.15	47.00	-4.85	Horizontal
291.04	51.04	14.89	2.32	29.94	38.31	47.00	-8.69	Horizontal

UTRA-FDD Mode

Frequency (MHz)	Read Level (dBuV)	Antenna Factor (dB/m)	Cable Loss (dB)	Preamp Factor (dB)	Level (dBuV/m)	Limit Line (dBuV/m)	Over Limit (dB)	Polarity
48.50	40.79	15.34	0.76	30.01	26.88	40.00	-13.12	Vertical
87.42	39.30	13.18	1.09	29.76	23.81	40.00	-16.19	Vertical
125.45	51.23	11.61	1.40	29.54	34.70	40.00	-5.30	Vertical
159.78	50.87	10.64	1.63	29.36	33.78	40.00	-6.22	Vertical
207.85	49.39	12.80	1.89	29.28	34.80	40.00	-5.20	Vertical
302.48	47.34	15.08	2.37	29.98	34.81	47.00	-12.19	Vertical
59.86	34.42	14.71	0.86	29.92	20.07	40.00	-19.93	Horizontal
112.13	39.70	13.83	1.30	29.62	25.21	40.00	-14.79	Horizontal
142.82	50.00	10.21	1.52	29.44	32.29	40.00	-7.71	Horizontal
186.44	49.55	12.24	1.77	29.25	34.31	40.00	-5.69	Horizontal
220.62	49.96	13.20	1.96	29.39	35.73	40.00	-4.27	Horizontal
294.11	47.04	14.95	2.33	29.97	34.35	47.00	-12.65	Horizontal

E-UTRA Mode

Frequency (MHz)	Read Level (dBuV)	Antenna Factor (dB/m)	Cable Loss (dB)	Preamp Factor (dB)	Level (dBuV/m)	Limit Line (dBuV/m)	Over Limit (dB)	Polarity
53.51	38.06	15.08	0.80	29.97	23.97	40.00	-16.03	Vertical
85.30	41.42	12.45	1.07	29.77	25.17	40.00	-14.83	Vertical
127.67	48.76	11.32	1.42	29.52	31.98	40.00	-8.02	Vertical
153.20	51.81	10.39	1.59	29.39	34.40	40.00	-5.60	Vertical
188.41	49.67	12.40	1.78	29.24	34.61	40.00	-5.39	Vertical
283.98	48.75	14.75	2.29	29.90	35.89	47.00	-11.11	Vertical
64.66	32.71	12.84	0.90	29.89	16.56	40.00	-23.44	Horizontal
116.95	44.78	13.00	1.34	29.59	29.53	40.00	-10.47	Horizontal
149.49	52.02	10.26	1.56	29.41	34.43	40.00	-5.57	Horizontal
193.77	48.23	12.56	1.81	29.22	33.38	40.00	-6.62	Horizontal
234.99	51.55	13.83	2.05	29.52	37.91	47.00	-9.09	Horizontal
270.38	54.20	14.38	2.22	29.80	41.00	47.00	-6.00	Horizontal

LAN Mode

Frequency (MHz)	Read Level (dBuV)	Antenna Factor (dB/m)	Cable Loss (dB)	Preamp Factor (dB)	Level (dBuV/m)	Limit Line (dBuV/m)	Over Limit (dB)	Polarity
51.66	36.72	15.17	0.79	29.99	22.69	40.00	-17.31	Vertical
83.23	41.49	11.72	1.06	29.78	24.49	40.00	-15.51	Vertical
144.84	50.47	10.23	1.53	29.43	32.80	40.00	-7.20	Vertical
210.79	46.83	12.90	1.90	29.30	32.33	40.00	-7.67	Vertical
289.00	49.51	14.84	2.31	29.93	36.73	47.00	-10.27	Vertical
354.18	47.13	16.33	2.64	29.72	36.38	47.00	-10.62	Vertical
56.79	32.12	14.89	0.83	29.94	17.90	40.00	-22.10	Horizontal
114.11	41.23	13.52	1.31	29.60	26.46	40.00	-13.54	Horizontal
137.42	49.35	10.35	1.49	29.47	31.72	40.00	-8.28	Horizontal
180.65	49.91	11.76	1.74	29.27	34.14	40.00	-5.86	Horizontal
228.49	49.23	13.57	2.01	29.47	35.34	40.00	-4.66	Horizontal
281.01	53.21	14.70	2.27	29.88	40.30	47.00	-6.70	Horizontal

## Above 1GHz

WiFi Mode

Peak measurement

Frequency (MHz)	Read Level (dBuV)	Antenna Factor (dB/m)	Cable Loss (dB)	Preamp Factor (dB)	Level (dBuV/m)	Limit Line (dBuV/m)	Over Limit (dB)	Polarity
1330.00	36.45	25.68	4.57	33.30	33.40	70.00	-36.60	Vertical
2245.00	35.20	28.01	5.23	34.19	34.25	70.00	-35.75	Vertical
3160.00	36.75	28.85	6.27	33.14	38.73	74.00	-35.27	Vertical
3730.00	32.16	29.27	7.38	32.48	36.33	74.00	-37.67	Vertical
4915.00	30.02	31.89	8.69	32.14	38.46	74.00	-35.54	Vertical
5625.00	27.69	32.32	9.70	32.36	37.35	74.00	-36.65	Vertical
1385.00	36.14	25.62	4.61	33.42	32.95	70.00	-37.05	Horizontal
2380.00	34.72	27.63	5.37	34.03	33.69	70.00	-36.31	Horizontal
3490.00	36.43	28.93	6.93	32.77	39.52	74.00	-34.48	Horizontal
4310.00	30.92	30.77	8.16	31.85	38.00	74.00	-36.00	Horizontal
4955.00	30.39	31.91	8.73	32.16	38.87	74.00	-35.13	Horizontal
5705.00	29.66	32.50	9.79	32.30	39.65	74.00	-34.35	Horizontal

## UTRA-FDD Mode

Peak measurement

Frequency (MHz)	Read Level (dBuV)	Antenna Factor (dB/m)	Cable Loss (dB)	Preamp Factor (dB)	Level (dBuV/m)	Limit Line (dBuV/m)	Over Limit (dB)	Polarity
1595.00	36.14	24.99	4.74	33.76	32.11	70.00	-37.89	Vertical
2460.00	35.86	27.49	5.45	33.94	34.86	70.00	-35.14	Vertical
3465.00	35.63	28.87	6.89	32.79	38.60	74.00	-35.40	Vertical
4270.00	31.05	30.58	8.12	31.88	37.87	74.00	-36.13	Vertical
5035.00	29.52	31.98	8.81	32.20	38.11	74.00	-35.89	Vertical
5685.00	28.69	32.47	9.77	32.31	38.62	74.00	-35.38	Vertical
1515.00	35.85	25.20	4.69	33.62	32.12	70.00	-37.88	Horizontal
2520.00	35.47	27.58	5.51	33.88	34.68	70.00	-35.32	Horizontal
3610.00	32.56	29.14	7.17	32.62	36.25	74.00	-37.75	Horizontal
4535.00	30.77	31.40	8.37	31.96	38.58	74.00	-35.42	Horizontal
5295.00	29.08	31.72	9.22	32.33	37.69	74.00	-36.31	Horizontal
5775.00	27.37	32.61	9.90	32.26	37.62	74.00	-36.38	Horizontal

E-UTRA Mode  
Peak measurement

Frequency (MHz)	Read Level (dBuV)	Antenna Factor (dB/m)	Cable Loss (dB)	Preamp Factor (dB)	Level (dBuV/m)	Limit Line (dBuV/m)	Over Limit (dB)	Polarity
1755.00	36.42	25.09	4.83	34.03	32.31	70.00	-37.69	Vertical
2580.00	35.44	27.74	5.56	33.80	34.94	70.00	-35.06	Vertical
3525.00	35.02	29.04	7.01	32.71	38.36	74.00	-35.64	Vertical
4350.00	30.92	30.93	8.21	31.86	38.20	74.00	-35.80	Vertical
5190.00	29.70	32.00	9.06	32.27	38.49	74.00	-35.51	Vertical
5815.00	27.77	32.66	9.95	32.24	38.14	74.00	-35.86	Vertical
1650.00	35.62	24.86	4.77	33.85	31.40	70.00	-38.60	Horizontal
2535.00	35.59	27.60	5.52	33.86	34.85	70.00	-35.15	Horizontal
3735.00	32.22	29.29	7.40	32.48	36.43	74.00	-37.57	Horizontal
4790.00	31.23	31.76	8.59	32.08	39.50	74.00	-34.50	Horizontal
5150.00	30.64	32.07	8.99	32.26	39.44	74.00	-34.56	Horizontal
5340.00	28.59	31.73	9.29	32.35	37.26	74.00	-36.74	Horizontal

LAN Mode  
Peak measurement

Frequency (MHz)	Read Level (dBuV)	Antenna Factor (dB/m)	Cable Loss (dB)	Preamp Factor (dB)	Level (dBuV/m)	Limit Line (dBuV/m)	Over Limit (dB)	Polarity
1955.00	35.63	25.95	4.94	34.37	32.15	70.00	-37.85	Vertical
2735.00	35.00	28.23	5.70	33.63	35.30	70.00	-34.70	Vertical
3525.00	35.02	29.04	7.01	32.71	38.36	74.00	-35.64	Vertical
4320.00	32.01	30.77	8.17	31.85	39.10	74.00	-34.90	Vertical
4925.00	29.78	31.89	8.70	32.15	38.22	74.00	-35.78	Vertical
5705.00	29.17	32.50	9.79	32.30	39.16	74.00	-34.84	Vertical
1260.00	36.94	25.55	4.51	33.18	33.82	70.00	-36.18	Horizontal
1940.00	36.75	25.90	4.93	34.34	33.24	70.00	-36.76	Horizontal
3120.00	36.99	28.78	6.19	33.18	38.78	74.00	-35.22	Horizontal
4320.00	32.35	30.77	8.17	31.85	39.44	74.00	-34.56	Horizontal
4800.00	30.05	31.78	8.60	32.09	38.34	74.00	-35.66	Horizontal
5540.00	29.45	32.09	9.56	32.41	38.69	74.00	-35.31	Horizontal

Remark:

1. The EUT was test at 3m in field chamber.
- 2.If the average limit is met when using a Peak detector, the EUT shall be deemed to meet both peak and average limits. And measurement with the average detector is unnecessary.

## 7.1.2 Conducted Emissions

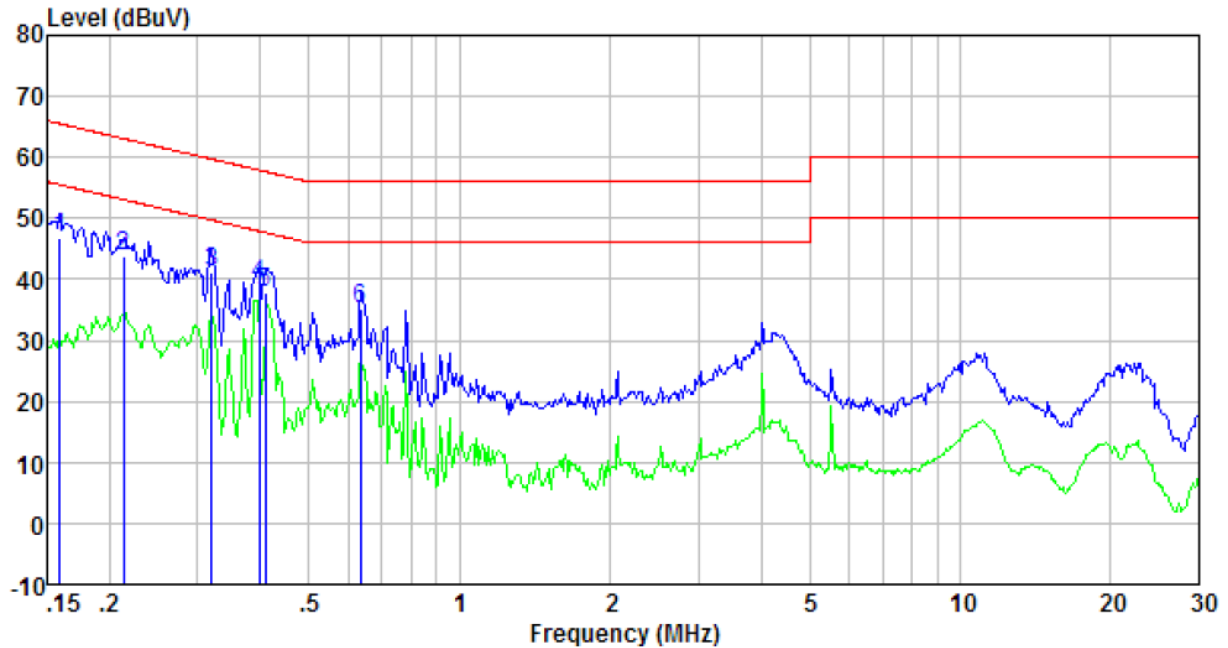
Test Requirement:	ETSI EN 301 489-17/-52, EN 55032					
Test Method:	ETSI EN 301 489-1 ;EN55032					
TestFrequencyRange:	150kHz to 30MHz					
Class / Severity:	Class B					
Receiver setup:	RBW=9kHz, VBW=30kHz					
Limit:	Frequency range (MHz)	Limit (dBuV)				
		Quasi-peak	Average			
	0.15-0.5	66 to 56*	56 to 46*			
	0.5-5	56	46			
	5-30	60	50			
* Decreases with the logarithm of the frequency.						
Test setup:	<p>Remark:                  E.U.T: Equipment Under Test                  LISN: Line Impedance Stabilization Network                  Test table height=0.8m</p>					
Test procedure	<ol style="list-style-type: none"> <li>1. The E.U.T and simulators are connected to the main power through a line impedance stabilization network(L.I.S.N.). The provide a 50ohm/50uH coupling impedance for the measuring equipment.</li> <li>2. The peripheral devices are also connected to the main power through a LISN that provides a 50ohm/50uH coupling impedance with 50ohm termination. (Please refers to the block diagram of the test setup and photographs).</li> <li>3. Both sides of A.C. line are checked for maximum conducted interference. In order to find the maximum emission, the relative positions of equipment and all of the interface cables must be changed according to EN55022 Class B on conducted measurement.</li> </ol>					
Test Instruments:	Temp.:	24°C	Humid.:	51%	Press.:	1010mbar
Measurement Record:	Uncertainty: ±3.45dB					
Test Instruments:	Refer to section 6.0 for details					
Test mode:	Refer to section 5.3 for details, Only show test data of the worse mode on the test report.					
Test results:	Pass					



## Measurement Data

WiFi Mode

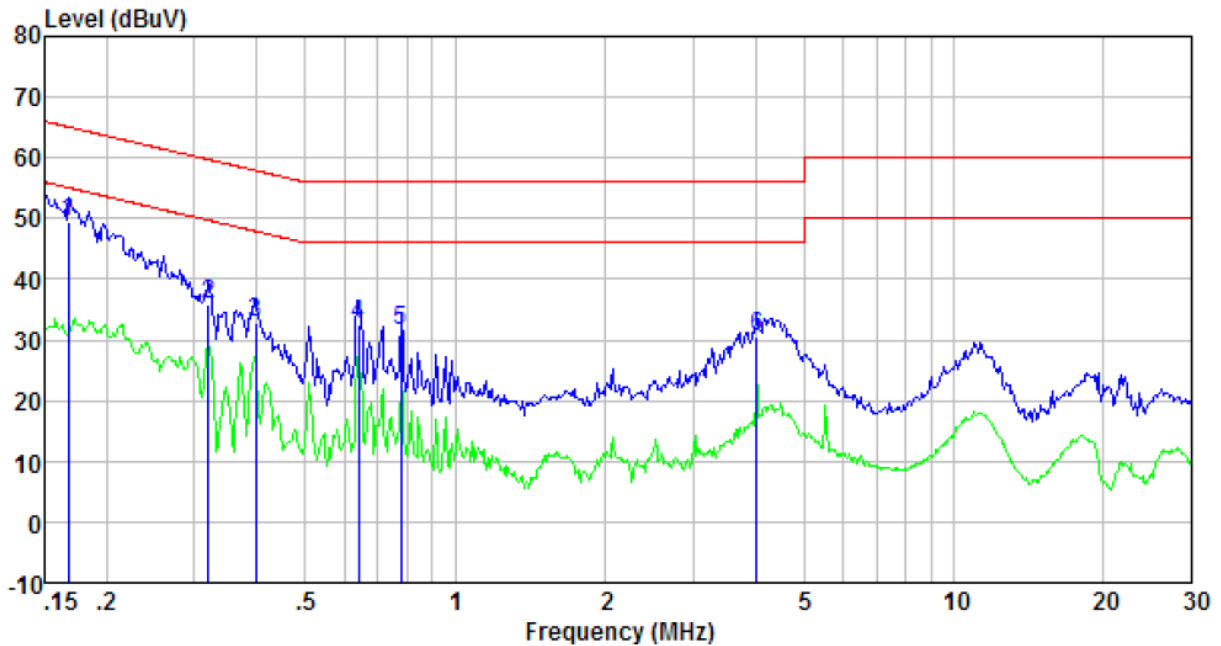
Line:



Freq MHz	Reading level dBuV	LIISN/ISN factor dB/m	Cable loss dBuV/m	level dB	Limit level dBuV/m	Over limit dB	Remark
0.159	46.27	0.42	0.12	46.81	65.52	-18.71	Peak
0.213	43.17	0.43	0.13	43.73	63.10	-19.37	Peak
0.320	40.49	0.44	0.10	41.03	59.71	-18.68	Peak
0.398	38.50	0.42	0.11	39.03	57.90	-18.87	Peak
0.408	37.20	0.41	0.11	37.72	57.68	-19.96	Peak
0.634	34.83	0.30	0.13	35.26	56.00	-20.74	Peak

Remarks: level = Reading level + Antenna factor + Cable loss

Neutral:

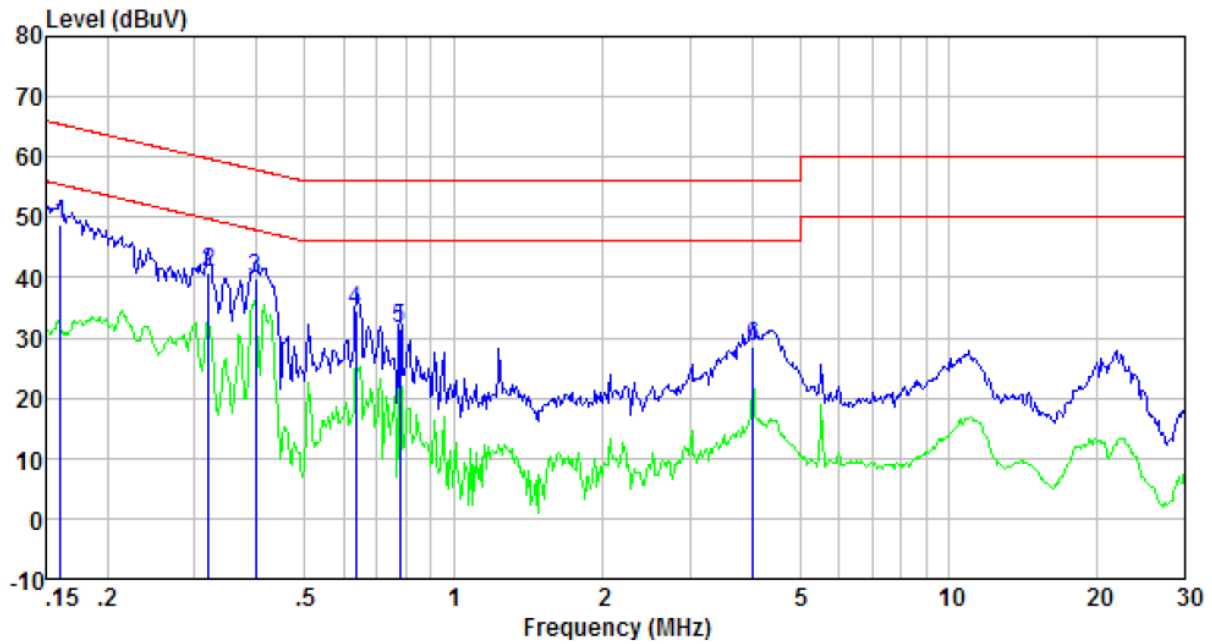


Freq MHz	Reading level dBuV	IISN/ISN factor dB/m	Cable loss dBuV/m	level dB	Limit level dBuV/m	Over limit dB	Remark
0.168	48.82	0.41	0.12	49.35	65.08	-15.73	QP
0.320	35.32	0.42	0.10	35.84	59.71	-23.87	QP
0.398	32.34	0.39	0.11	32.84	57.90	-25.06	QP
0.641	32.15	0.26	0.13	32.54	56.00	-23.46	QP
0.779	31.16	0.23	0.13	31.52	56.00	-24.48	QP
4.027	30.02	0.21	0.15	30.38	56.00	-25.62	QP

Remarks: level = Reading level + Antenna factor + Cable loss

UTRA-FDD Mode

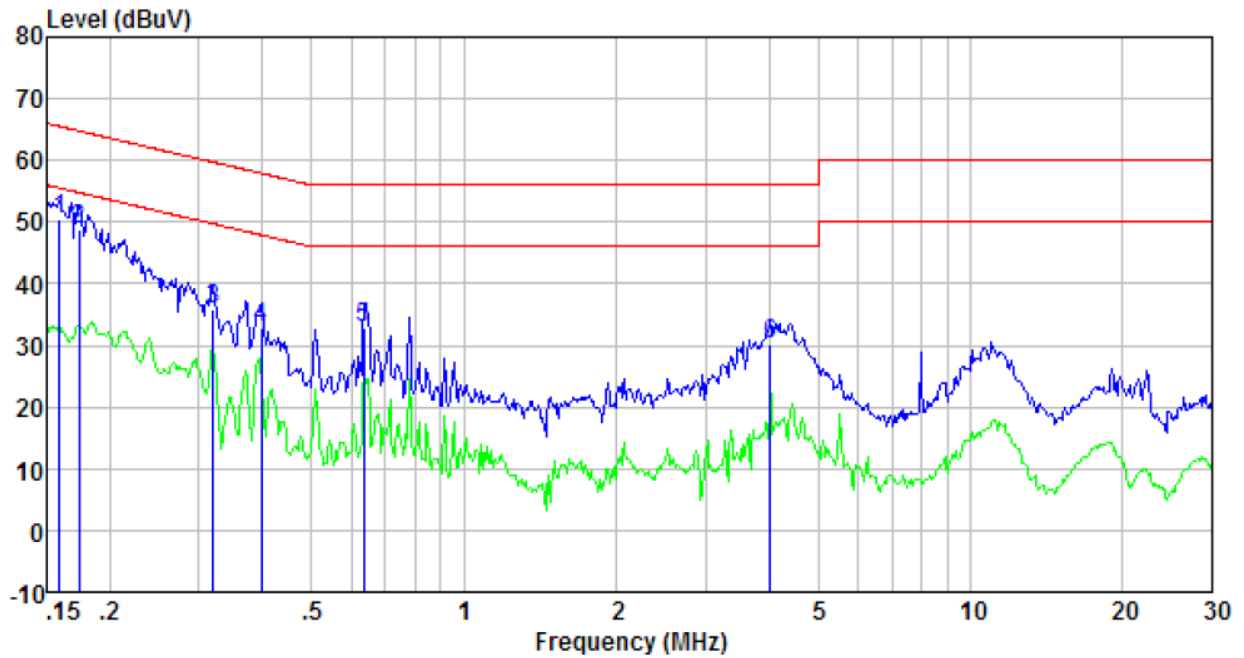
Line:



Freq MHz	Reading level dBuV	LIISN/ISN factor dB/m	Cable loss dBuV/m	level dB	Limit level dBuV/m	Over limit dB	Remark
0.161	48.16	0.42	0.12	48.70	65.43	-16.73	QP
0.320	40.22	0.44	0.10	40.76	59.71	-18.95	QP
0.398	39.13	0.42	0.11	39.66	57.90	-18.24	QP
0.634	34.08	0.30	0.13	34.51	56.00	-21.49	QP
0.779	31.14	0.27	0.13	31.54	56.00	-24.46	QP
4.027	28.14	0.21	0.15	28.50	56.00	-27.50	QP

Remarks: level = Reading level + Antenna factor + Cable loss

Neutral:

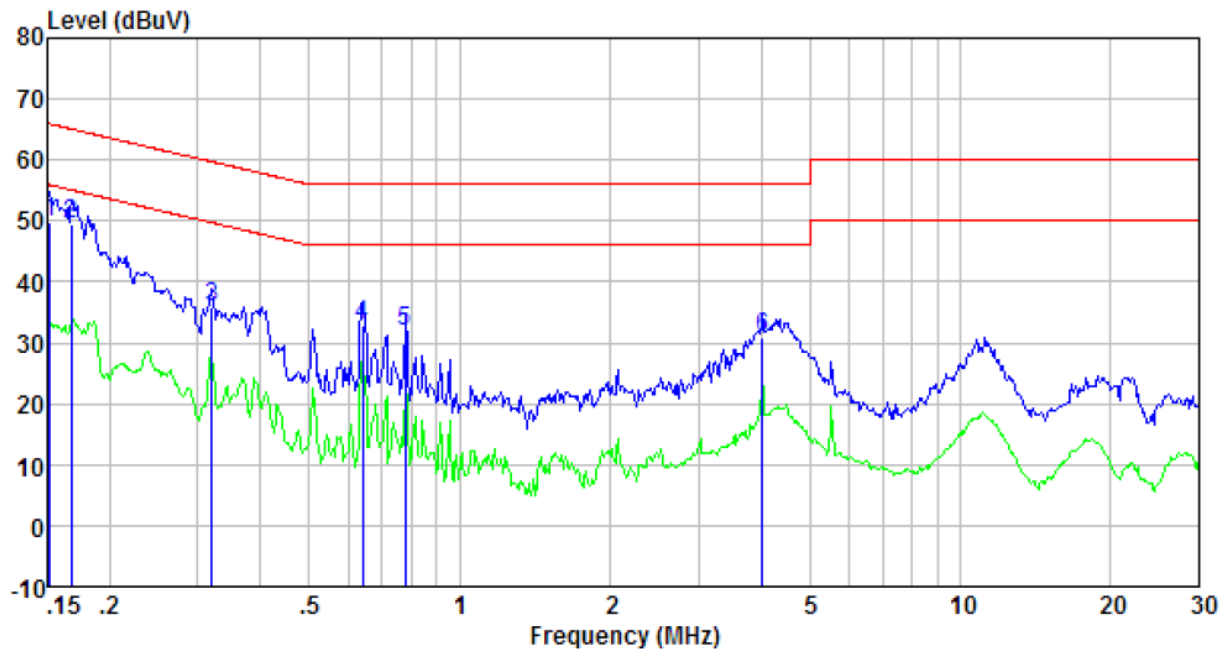


Freq MHz	Reading level dBuV	IISN/ISN factor dB/m	Cable loss dBuV/m	level dB	Limit level dBuV/m	Over limit dB	Remark
0.159	50.03	0.41	0.12	50.56	65.52	-14.96	QP
0.174	48.32	0.41	0.13	48.86	64.77	-15.91	QP
0.320	35.31	0.42	0.10	35.83	59.71	-23.88	QP
0.398	32.44	0.39	0.11	32.94	57.90	-24.96	QP
0.634	32.48	0.26	0.13	32.87	56.00	-23.13	QP
4.027	29.78	0.21	0.15	30.14	56.00	-25.86	QP

Remarks: level = Reading level + Antenna factor + Cable loss

E-UTRA Mode

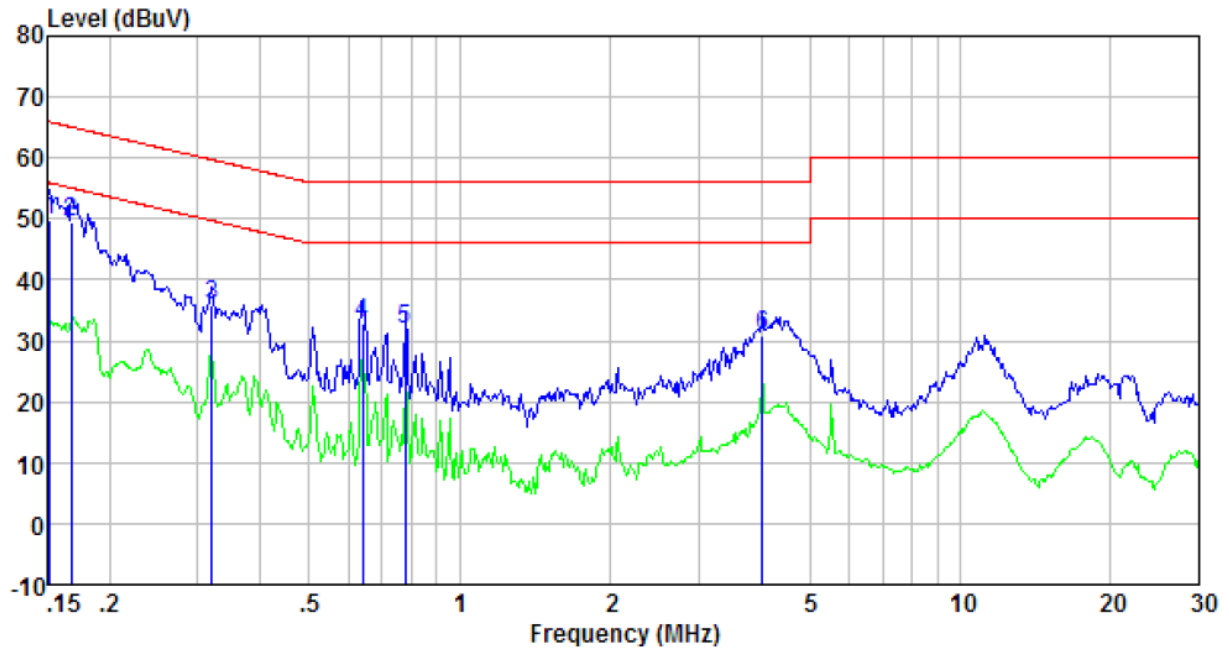
Line:



Freq MHz	Reading level dBuV	IISN/ISN factor dB/m	Cable loss dBuV/m	level dB	Limit level dBuV/m	Over limit dB	Remark
0.152	49.26	0.41	0.12	49.79	65.91	-16.12	QP
0.168	48.97	0.41	0.12	49.50	65.08	-15.58	QP
0.320	35.21	0.42	0.10	35.73	59.71	-23.98	QP
0.641	32.29	0.26	0.13	32.68	56.00	-23.32	QP
0.779	31.43	0.23	0.13	31.79	56.00	-24.21	QP
4.027	30.64	0.21	0.15	31.00	56.00	-25.00	QP

Remarks: level = Reading level + Antenna factor + Cable loss

Neutral:

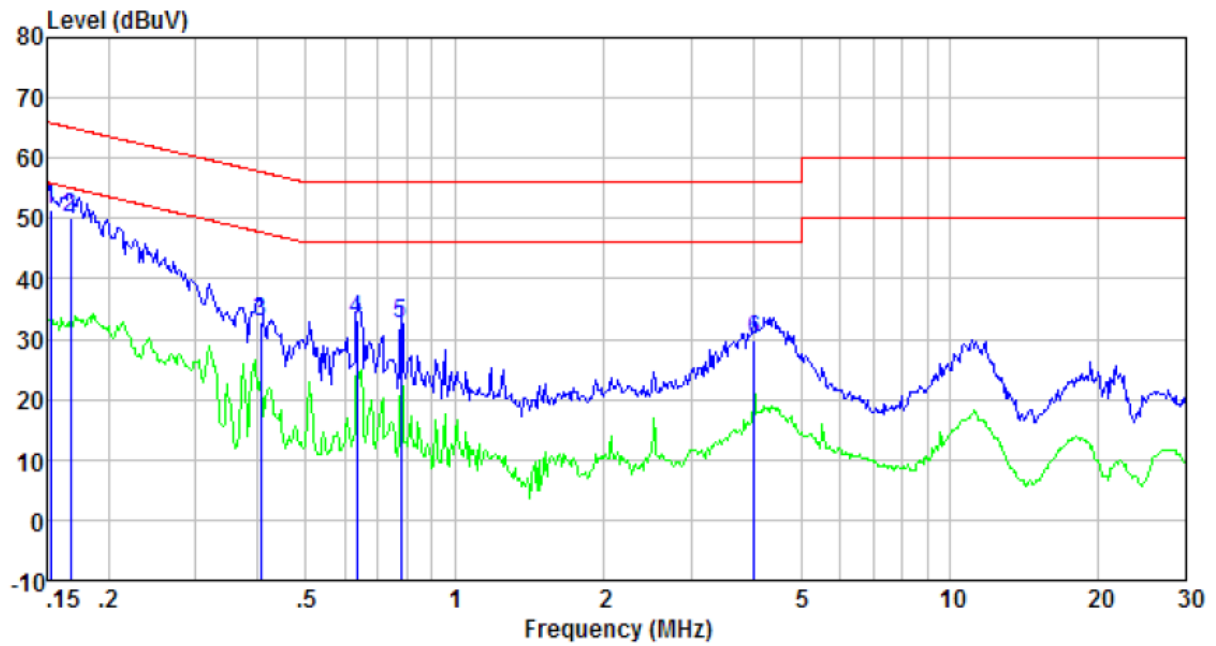


Freq MHz	Reading level dBuV	IISN/ISN factor dB/m	Cable loss dBuV/m	level dB	Limit level dBuV/m	Over limit dB	Remark
0.152	49.26	0.41	0.12	49.79	65.91	-16.12	QP
0.168	48.97	0.41	0.12	49.50	65.08	-15.58	QP
0.320	35.21	0.42	0.10	35.73	59.71	-23.98	QP
0.641	32.29	0.26	0.13	32.68	56.00	-23.32	QP
0.779	31.43	0.23	0.13	31.79	56.00	-24.21	QP
4.027	30.64	0.21	0.15	31.00	56.00	-25.00	QP

Remarks: level = Reading level + Antenna factor + Cable loss

LAN Mode

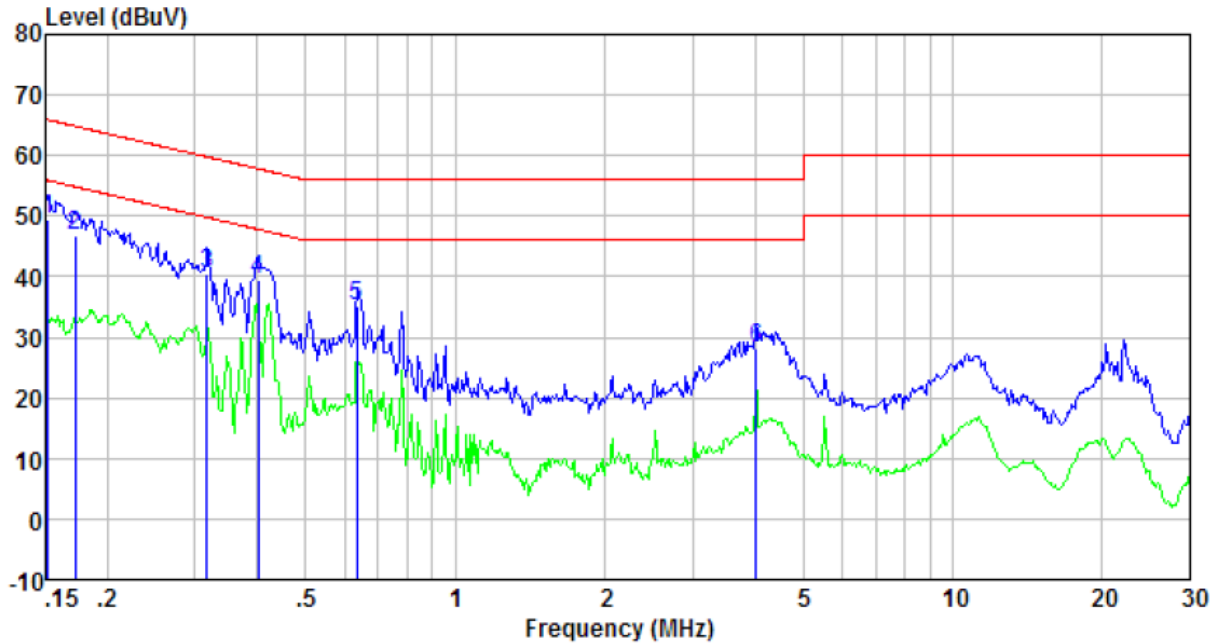
Line:



Freq MHz	Reading level dBuV	IISN/ISN factor dB/m	Cable loss dBuV/m	level dB	Limit level dBuV/m	Over limit dB	Remark
0.152	51.03	0.41	0.12	51.56	65.87	-14.31	QP
0.168	49.70	0.41	0.12	50.23	65.08	-14.85	QP
0.406	32.23	0.39	0.11	32.73	57.73	-25.00	QP
0.634	32.81	0.26	0.13	33.20	56.00	-22.80	QP
0.779	32.08	0.23	0.13	32.44	56.00	-23.56	QP
4.027	29.40	0.21	0.15	29.76	56.00	-26.24	QP

Remarks: level = Reading level + Antenna factor + Cable loss

Neutral:



Freq MHz	Reading level dBuV	LISN/ISN factor dB/m	Cable loss dBuV/m	level dB	Limit level dBuV/m	Over limit dB	Remark
0.152	49.03	0.42	0.12	49.57	65.91	-16.34	QP
0.172	46.30	0.42	0.12	46.84	64.86	-18.02	QP
0.317	40.09	0.44	0.10	40.63	59.80	-19.17	QP
0.402	38.98	0.42	0.11	39.51	57.81	-18.30	QP
0.634	34.58	0.30	0.13	35.01	56.00	-20.99	QP
4.027	27.97	0.21	0.15	28.33	56.00	-27.67	QP

Remarks: level = Reading level + Antenna factor + Cable loss

Notes:

1. An initial pre-scan was performed on the live and neutral lines with peak detector.
2. Quasi-Peak and Average measurement were performed at the frequencies with maximized peak emission.
3. Final Level = Receiver Read level + LISN Factor + Cable Loss
4. If the average limit is met when using a quasi-peak detector receiver, the EUT shall be deemed to meet both limits and measurement with the average detector receiver is unnecessary.



### 7.1.3 Harmonics Test Results

Test Requirement:	ETSI EN 301 489-17/-52, EN 61000-3-2
Test Method:	N/A: See Remark Below
Remark:	There is no need for Harmonics test to be performed on this product(rated power is less than 75W) in accordance with EN 61000-3-2. For further details, please refer to Clause 7, Note 1 of EN 61000-3-2 Which states: "For the following categories of equipment limits are not specified in this edition of the standard. Note 1: Equipment with a rated power of 75W or less, other than lighting equipment."

### 7.1.4 Flicker Test Results

Test Requirement:	ETSI EN 301 489-17/-24, EN 61000-3-3
Test Method:	EN 61000-3-3
Class/Severity:	Clause 5 of EN 61000-3-3
Measurement Time:	10 min
Detector:	As per EN 61000-3-3
Test Instruments:	Temp.: 24°C Humid.: 51% Press.: 1010mbar
Test Instruments:	Refer to section 6.0 for details
Test mode:	Refer to section 5.3 for details, Only show test data of the worse mode on the test report.
Test results:	Pass

### Measurement Data

#### Test Data of Voltage Fluctuation and Flicker

Final Test Result	<b>Pass</b>
Nominal Voltage	230 V
Nominal Frequency	50 Hz
Plt Test Duration	600 s
Flicker Margin	10 %
d Measurement Margin	10 %

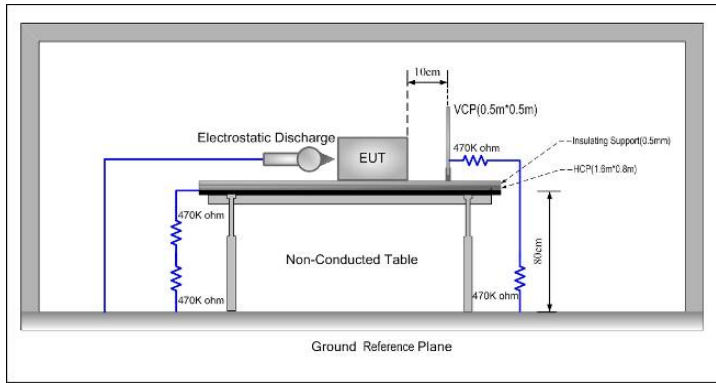
Segment	Pst	dmax(%)	dc(%)	d(t)>3.3%(ms)	Judge
Limit	1.000	4.000	3.300	500	
Seg. 1	0.006	0.039	0.009	0	<b>Pass</b>

Plt	Value	Judge
Limit	0.650	
Measurement	0.003	<b>Pass</b>

## 7.2 Immunity

Performance Criteria of ETSI EN 301 489-17/52, EN 55024 clause 6	
Continuous phenomena applied to transmitters (CT)	<ol style="list-style-type: none"> <li>1. During the test, the uplink speech output level shall be at least 35 dB less than the previously recorded reference levels, when measured through an audio band pass filter of width 200 Hz, centred on 1 kHz (audio breakthrough check).</li> <li>2. At the conclusion of the test, the EUT shall operate as intended with no loss of user control functions or stored data, and the communication link shall have been maintained.</li> <li>3. In addition to confirming the above performance during a call, the test shall also be performed in idle mode, and the transmitter shall not unintentionally operate.</li> </ol>
Transient phenomena applied to Transmitters (TT)	<ol style="list-style-type: none"> <li>1. At the conclusion of each exposure the EUT shall operate with no user noticeable loss of the communication link.</li> <li>2. At the conclusion of the total test comprising the series of individual exposures, the EUT shall operate as intended with no loss of user control functions or stored data, as declared by the manufacturer, and the communication link shall have been maintained.</li> <li>3. In addition to confirming the above performance during a call, the test shall also be performed in idle mode, and the transmitter shall not unintentionally operate.</li> </ol>
Continuous phenomena applied to Receivers (CR)	<ol style="list-style-type: none"> <li>1. During the test, the RXQUAL of the downlink shall not exceed the value of three, measured during each individual exposure in the test sequence.</li> <li>2. During the test, the downlink speech output level shall be at least 35 dB less than the previously recorded reference levels, when measured through an audio band pass filter of width 200 Hz, centred on 1 kHz (audio breakthrough check).</li> <li>3. At the conclusion of the test, the EUT shall operate as intended with no loss of user control the The communication link shall have been maintained.</li> </ol>
Transient phenomena applied to Receivers (TR)	<ol style="list-style-type: none"> <li>1. At the conclusion of each exposure the EUT shall operate with no user noticeable loss of the communication link.</li> <li>2. At the conclusion of the total test comprising the series of individual exposures, the EUT shall operate as intended with no loss of user control functions or stored data, as declared by the manufacturer, and the communication link shall have been maintained</li> </ol>
Ancillary equipment tested on a stand alone basis	<p>If ancillary equipment is intended to be tested on a stand alone basis, the performance criteria described in the clauses above are not appropriate, then the manufacturer shall declare, for inclusion in the test report, his own specification for an acceptable level of performance or degradation of performance during and/or after the immunity tests. The performance specification shall be included in the product description and documentation.</p>

## 7.2.1 Electrostatic Discharge

Test Requirement:	ETSI EN 301489-17/-52, EN 55024
Test Method:	EN61000-4-2
Discharge Voltage:	Contact Discharge: $\pm 2\text{kV}$ , $\pm 4\text{kV}$ Air Discharge: $\pm 2\text{kV}$ , $\pm 4\text{kV}$ , $\pm 8\text{kV}$ HCP/VCP: $\pm 2\text{kV}$ , $\pm 4\text{kV}$
Polarity:	Positive & Negative
Number of Discharge:	Contact Discharge: Minimum 25 times at each test point, Air Discharge: Minimum 10 times at each test point.
Discharge Mode:	Single Discharge
Discharge Period:	1 second minimum
Limit:	Criteria B
Test setup:	
Test Procedure:	<p><b>Air discharge:</b></p> <ol style="list-style-type: none"> <li>1. The test was applied on non-conductive surfaces of EUT.</li> <li>2. The round discharge tip of the discharge electrode was approached as fast as possible to touch the EUT.</li> <li>3. After each discharge, the discharge electrode was removed from the EUT.</li> <li>4. The generator was re-triggered for a new single discharge and repeated 10 times for each pre-selected test point.</li> <li>5. This procedure was repeated until all the air discharge completed</li> </ol> <p><b>Contact Discharge:</b></p> <ol style="list-style-type: none"> <li>1. The test was applied on conductive surfaces of EUT.</li> <li>2. the generator was re-triggered for a new single discharge and repeated 10 times for each pre-selected test point.</li> <li>3. the tip of the discharge electrode was touch the EUT before the discharge switch was operated.</li> </ol> <p><b>Indirect discharge for horizontal coupling plane</b></p> <ol style="list-style-type: none"> <li>1. At least 10 single discharges shall be applied at the front edge of each HCP opposite the centre point of each unit of the EUT and 0.1m from the front of the EUT.</li> <li>2. The long axis of the discharge electrode shall be in the plane of the HCP and perpendicular to its front edge during the discharge.</li> <li>3. Consideration should be given to exposing all sides of the EUT.</li> </ol> <p><b>Indirect discharge for vertical coupling plane</b></p>

	<ol style="list-style-type: none"> <li>At least 10 single discharges were applied to the center of one vertical edge of the coupling plane.</li> <li>The coupling plane, of dimensions 0.5m X 0.5m, was placed parallel to, and positioned at a distance of 0.1m from the EUT.</li> <li>Discharges were applied to the coupling plane, with this plane in sufficient different positions that the four faces of the EUT are completely illuminated.</li> </ol>
Test environment:	Temp.: 24°C Humid.: 51% Press.: 1010mbar
Test Instruments:	Refer to section 6.0 for details
Test mode:	Refer to section 5.3 for details
Test results:	Pass

**Measurement Record:**

Test points:	I: All of the metal part			
	II: N/A			
<b>Direct discharge</b>				
Discharge Voltage (KV)	Type of discharge	Test points	ObservationsPer formance	Result
± 2, ± 4	Contact	I	A	Pass
± 2, ± 4, ± 8	Air	II	N/A	N/A
<b>Indirect discharge</b>				
Discharge Voltage (KV)	Type of discharge	Test points	Observation Performance	Result
± 2, ± 4	HCP-Bottom/Top/ Front/Back/Left/Right	Edge of the HCP	A	Pass
± 2, ± 4	VCP-Front/Back /Left/Right	Center of the VCP	A	Pass

Remark:

A:Normal performance within the specification limits.

## 7.2.2 Radiated Immunity

Test Requirement:	ETSI EN 301489-17/-52, EN 55024
Test Method:	EN 61000-4-3
Frequency range:	80MHz to 1GHz, 1.0GHz to 6.0GHz
Test Level:	3V/m
Modulation:	80%, 1kHz Amplitude Modulation
Performance Criterion:	Criteria A
Test setup:	
Test Procedure:	<ol style="list-style-type: none"> <li>1. For table-top equipment, the EUT was placed in the chamber on a non-conductive table 0.8m high. For arrangement of floor-standing equipment, the EUT was mounted on a non-conductive support 0.1m above the supporting plane. For human body-mounted equipment, the EUT may be tested in the same manner as table top items.</li> <li>2. If possible, a minimum of 1 m of cable is exposed to the electromagnetic field. Excess length of cables interconnecting units of the EUT shall be bundled low-inductively in the approximate center of the cable to form a bundle 30 cm to 40 cm in length.</li> <li>3. The EUT was initially placed with one face coincident with the calibration plane. The EUT face being illuminated was contained within the UFA (Uniform Field Area).</li> <li>4. The frequency ranges to be considered were swept with the signal modulated and pausing to adjust the RF signal level or to switch oscillators and antennas as necessary. Where the frequency range was swept incrementally, the step size was not exceed 1 % of the preceding frequency value.</li> <li>5. The dwell time of the amplitude modulated carrier at each frequency was not be less than the time necessary for the EUT to be exercised and to respond, and was not less than 0,5 s.</li> <li>6. The test normally was performed with the generating antenna facing each side of the EUT.</li> <li>7. The polarization of the field generated by each antenna necessitates testing each selected side twice, once with the antenna positioned vertically and again with the antenna positioned horizontally.</li> <li>8. The EUT was performed in a configuration to actual installation conditions, a video camera and/or a audio monitor were used to monitor the performance of the EUT.</li> </ol>

Test monitor:	<b>Traffic mode:</b> Uplink level, downlink level, RX quality					
	<b>Idle mode:</b> 1. The test system shall simulate a Base Station (BS) with Broadcast Control Channel/Common Control Channel (BCCH/CCCH) on one carrier. 2. The EUT shall be synchronized to the BCCH, listening to the CCCH and able to respond to paging messages.					
Test environment:	Temp.:	25°C	Humid.:	52%	Press.:	1010mbar
Test Instruments:	Refer to section 6.0 for details					
Test results:	Pass					

### Measurement Record:

Frequency	Level	Modulation	Operating Mode	Antenna Polarization	EUT Face	Observations (Performance Criterion)
80 MHz-1 GHz 1.0GHz-6.0GHz	3 V/m	1 kHz, 80 % Amp. Mod, 10 % increment, dwell time=3se conds	Idle mode	V	Front	A
				H		A
				V	Rear	A
				H		A
				V	Left	A
				H		A
				V	Right	A
				H		A
				V	Top	A
				H		A
				V	Bottom	A
				H		A

Remarks:

A: normal performance within the specification limits

### 7.2.3 Radio frequency common mode

Test Requirement:	ETSI EN 301489-17/-52, EN 55024
Test Method:	EN61000-4-6
Frequency range:	0.15MHz to 80MHz
Test Level:	3V rms on AC Ports (unmodulated emf into 150 Ω)
Modulation:	80%, 1kHz Amplitude Modulation
Performance Criterion:	Criteria A
Test setup:	
Test Procedure:	<ol style="list-style-type: none"> <li>1. Let the EUT work in test mode and test it.</li> <li>2. The EUT are placed on an insulating support 0.1m high above a groundreference plane. CDN (coupling and decoupling device) is placed on theground plane about 0.3m from EUT. Cables between CDN and EUT are asshort as possible, and their height above the ground reference plane shall bebetween 30 and 50 mm (where possible).</li> <li>3. The disturbance signal described below is injected to EUT through CDN.</li> <li>4. The EUT operates within its operational mode(s) under intended climaticconditions after power on.</li> <li>5. The frequency range is swept from 0.150MHz to 80MHz using 3V signal level,and with the disturbance signal 80% amplitude modulated with a 1kHz sinewave.The rate of sweep shall not exceed <math>1.5 \times 10^{-3}</math> decades/s. Where the frequency isswept incrementally; the step size shall not exceed 1% of the start andthereafter 1% of the preceding frequency value.</li> <li>6. Recording the EUT operating situation during compliance testing and decidethe EUT immunity criterion.</li> </ol>
Test environment:	Temp.: 24°C Humid.: 51% Press.: 1010mbar
Test Instruments:	Refer to section 6.0 for details
Test results:	Pass

### Measurement Record:

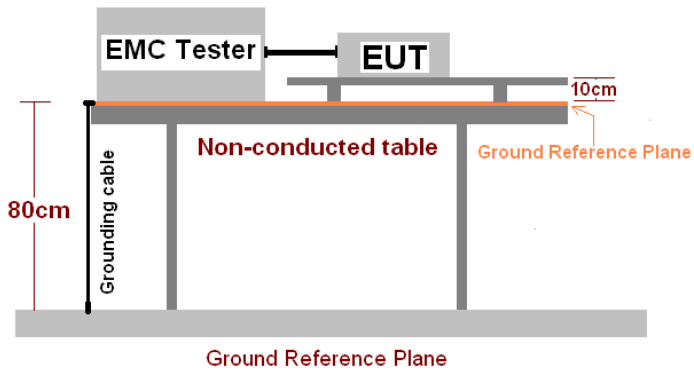
Frequency	Injected Position	Test Level	Modulation	Step Size	Dwell Time	Observations (Performance Criterion)
150kHz to 80MHz	AC Main	3Vrms	80%, 1kHz Amp. Mod.	1%	2s	A

Remark:

A:Normal performance within the specification limits.



## 7.2.4 Electrical Fast Transients

Test Requirement:	ETSI EN 301489-17/-52, EN 55024					
Test Method:	EN 61000-4-4					
Test Level:	1.0kV on AC port					
Polarity:	Positive & Negative					
Repetition Frequency:	5kHz					
Burst Duration:	15ms					
Burst Period:	300ms					
Test Duration:	2 minute per level & polarity					
Performance Criterion:	B					
Test setup:						
Test Procedure:	<ol style="list-style-type: none"> <li>1. The EUT and its simulators were placed on the ground reference plane and were insulated from it by a wood support 0.1m + 0.01m thick. The ground reference plane was 1m*1m metallic sheet with 0.65mm minimum thickness.</li> <li>2. This reference ground plane was project beyond the EUT by at least 0.1m on all sides and the minimum distance between EUT and all other conductive structure, except the ground plane was more than 0.5m.</li> <li>3. All cables to the EUT was placed on the wood support, cables not subject to EFT/B was routed as far as possible from the cable under test to minimize the coupling between the cables.</li> <li>4. The length of the signal and power lines between the coupling device and the EUT is 0.5m</li> </ol> <p><b>Test on SignalPorts, TelecommunicationPorts and ControlPorts:</b> The EFT interference signal is through a coupling clamp device couples to the signal and control lines of the EUT with burst noise for 2 minutes.</p> <p><b>Test on power supply ports:</b></p> <ol style="list-style-type: none"> <li>1. The EUT is connected to the power mains through a coupling device that directly couples the EFT/B interference signal.</li> <li>2. Each of the Line and Neutral conductors is impressed with burst noise for 2 minutes.</li> </ol>					
Test environment:	Temp.:	26°C	Humid.:	54%	Press.:	1010mbar
Test Instruments:	Refer to section 6.0 for details					
Test mode:	Refer to section 5.3 for details					

Test results:	Pass
---------------	------

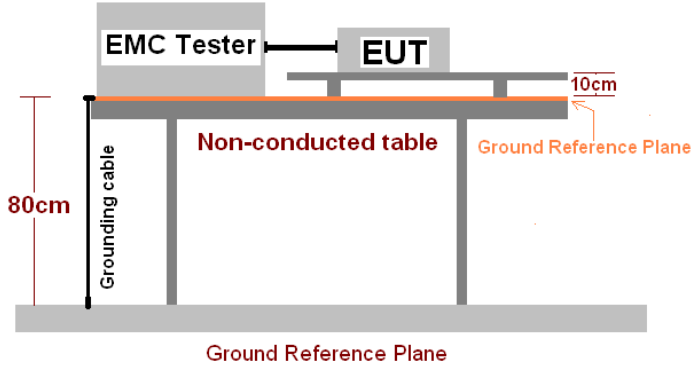
**Measurement Record:**

Lead under Test	Level ( $\pm$ kV)	Coupling Direct/Clamp	Observations (Performance Criterion)	Result
L	$\pm 1.0$	Direct	A	Pass
N	$\pm 1.0$	Direct	A	Pass
L-N	$\pm 1.0$	Direct	A	Pass

Remark:

A: Normal performance within the specification limits

## 7.2.5 Surge

Test Requirement:	ETSI EN 301489-17/-52, EN 55024
Test Method:	ETSI EN61000-4-5
Test Level:	±1kV Live to Neutral: Differential mode
Polarity:	Positive & Negative
Test Interval:	60s between each surge
No. of surges:	5 positive, 5 negative at 0°, 90°, 180°, 270°.
Performance Criterion:	B
Test setup:	 <p>The diagram illustrates the test setup. An EMC Tester and the Equipment Under Test (EUT) are positioned on a non-conducted table. The table is 80 cm high and has a grounding cable connected to a ground reference plane. The EUT is 10 cm above the table surface. A ground reference plane is also shown at the base of the setup.</p>
Test Procedure:	<ol style="list-style-type: none"> <li>1. For line-to-line coupling mode, provide a 1kV 1.2/50us voltage surge (at open-circuit condition) and 8/20us current surge to EUT selected points, and for active line / neutral lines to ground are same except test level is 2kV.</li> <li>2. At least 5 positive and 5 negative (polarity) tests with a maximum 1/min repetition rate are applied during test.</li> <li>3. Different phase angles are done individually.</li> <li>4. Record the EUT operating situation during compliance test and decide the EUT immunity criterion for above each test.</li> </ol>
Test environment:	Temp.: 26°C Humid.: 53% Press.: 1010mbar
Test Instruments:	Refer to section 6.0 for details
Test mode:	Refer to section 5.3 for details
Test results:	Pass

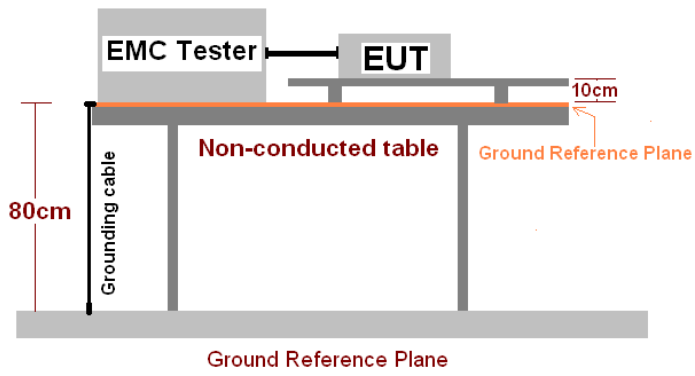
**Measurement Record:**

Location	Level(kV)	Pulse No	Surge Interval	Phase(deg)	Observations (Performance Criterion)
L-N	± 1	5	60s	0°	A
				90°	A
				180°	A
				270°	A

Remark:

A.Normal performance within the specification limits

## 7.2.6 Voltage Dip and Voltage Interruptions

Test Requirement:	ETSI EN 301489-17/-52, EN 55024
Test Method:	EN61000-4-11
Test Level:	0% of VT(Supply Voltage) for 0.5 period 0% of VT(Supply Voltage) for 1.0 period 70% of VT(Supply Voltage) for 25 period 0% of VT(Supply Voltage) for 250 period
No. of Dips / Interruptions:	3 per Level
Performance Criterion:	0% VD, 0.5 period----Performance criterion: B 0% VD, 1 period----Performance criterion: B 70% VD, 25 period----Performance criterion: C 0% VI, 250 period----Performance criterion: C
Test setup:	 <p>The diagram illustrates the test setup. An EMC Tester and an EUT are positioned on a Non-conducted table. The table is 80cm high and is grounded to a Ground Reference Plane. The EUT is 10cm above the table surface. A Grounding cable is connected to the EMC Tester.</p>
Test Procedure:	<ol style="list-style-type: none"> <li>1&gt;.The EUT and test generator were setup as shown on above setup photo.</li> <li>2&gt;.The interruptions are introduced at selected phase angles with specified duration.</li> <li>3&gt;.Record any degradation of performance.</li> </ol>
Test environment:	Temp.: 26°C Humid.: 53% Press.: 1010mbar
Test Instruments:	Refer to section 6.0 for details
Test mode:	Refer to section 5.3 for details
Test results:	Pass

**Measurement Record:**

Test Level $U_T$	Duration (Periods)	Phase angle	No of dropout	Time between dropout	Observations (Performance Criterion)
0%	0.5	0°, 90°, 180°, 270°	3	10s	A
0%	1.0	0°, 90°, 180°, 270°	3	10s	A
70%	25	0°, 90°, 180°, 270°	3	10s	A
0%	250	0°, 90°, 180°, 270°	3	10s	B

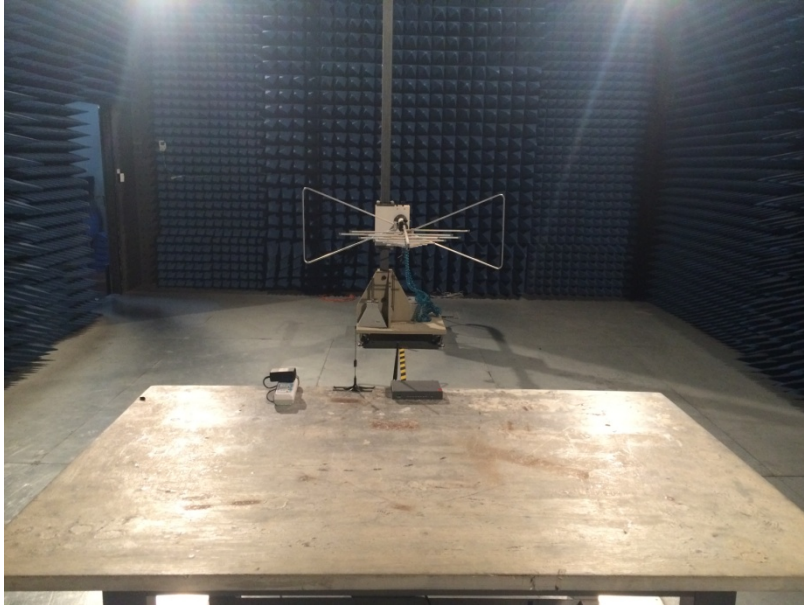
Remark:

A: No loss of function was observed.

B: During the test, the charging stopped, but after the test, the power charger can automatically return to normal

## 8 Test Setup Photo

### Radiated Emission



## Conducted Emission



## Flicker





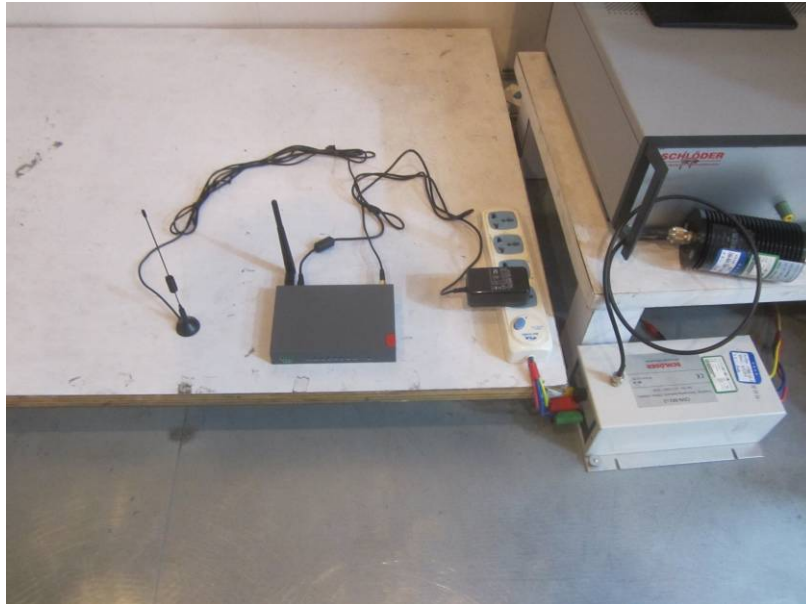
## ESD



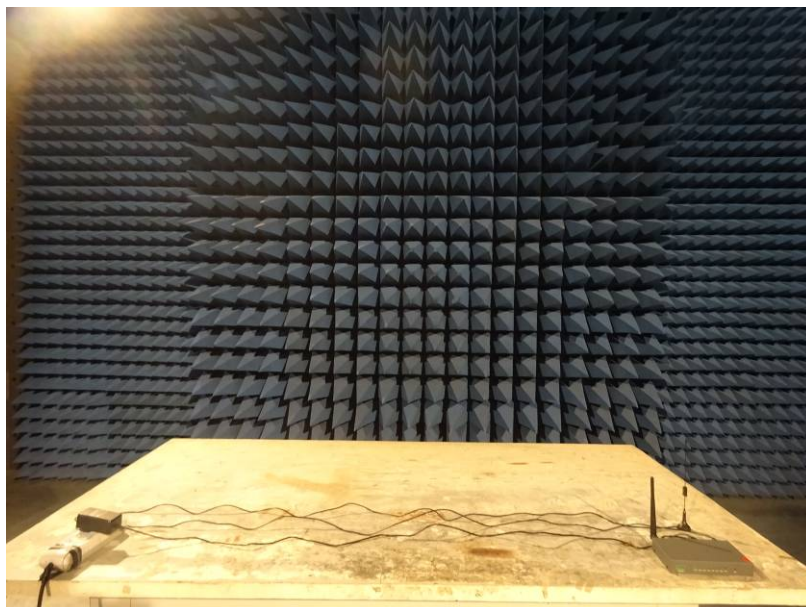
## Surges/EFT/V-dips



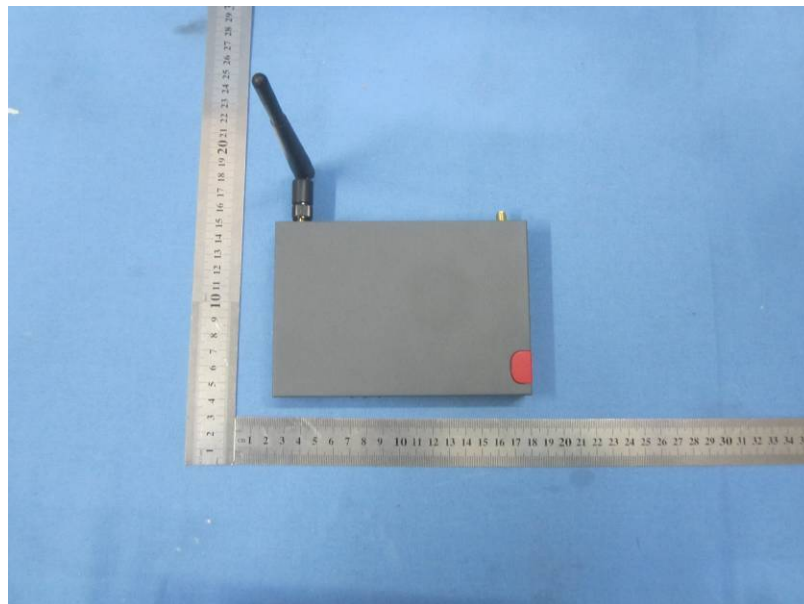
CS

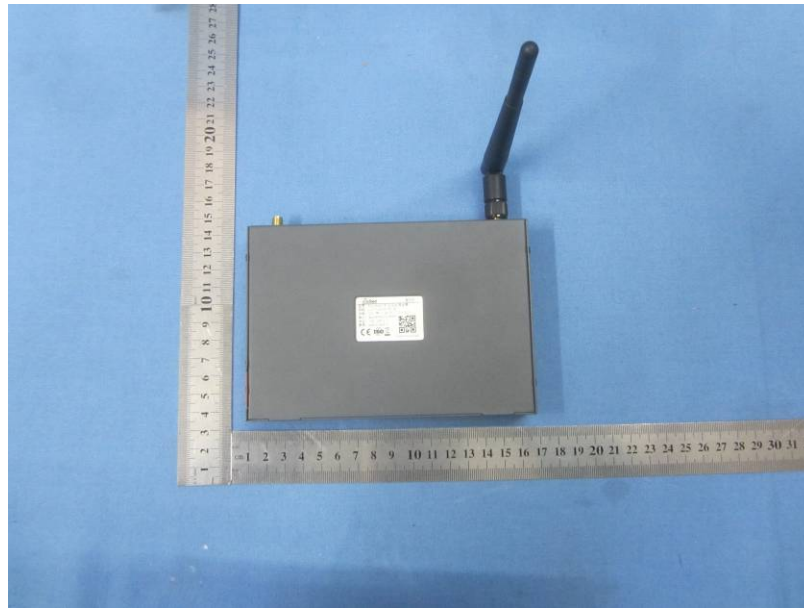


RS

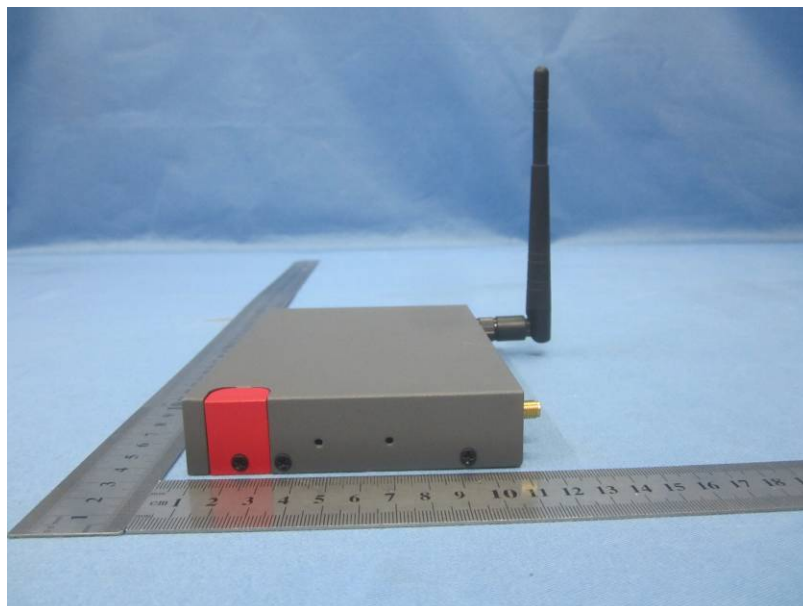


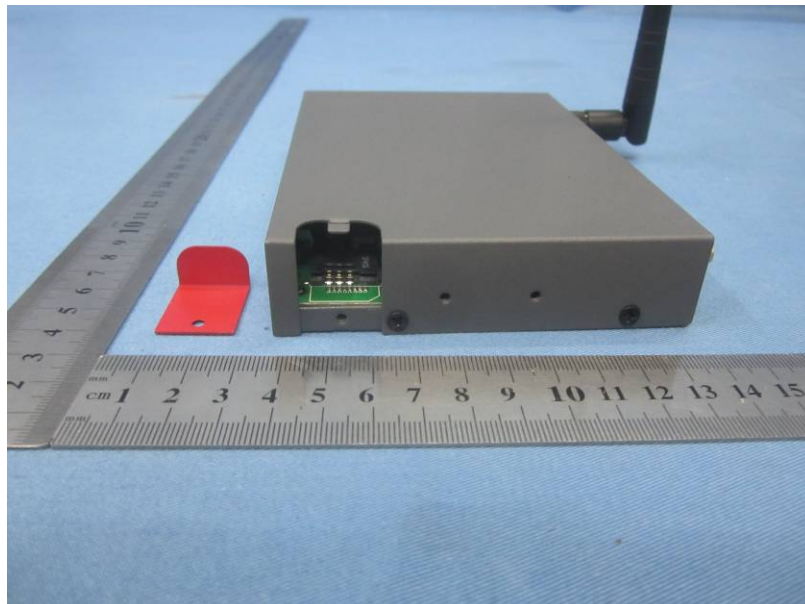
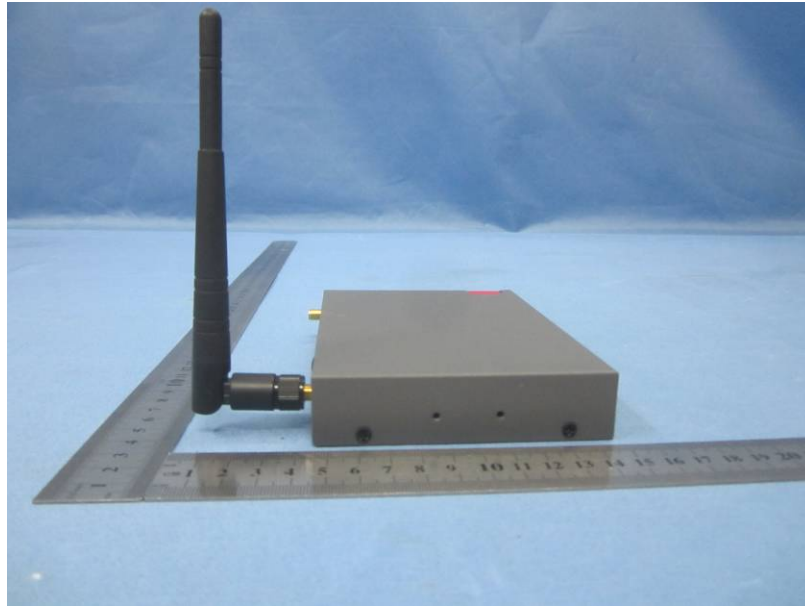
## 9 EUT Constructional Details

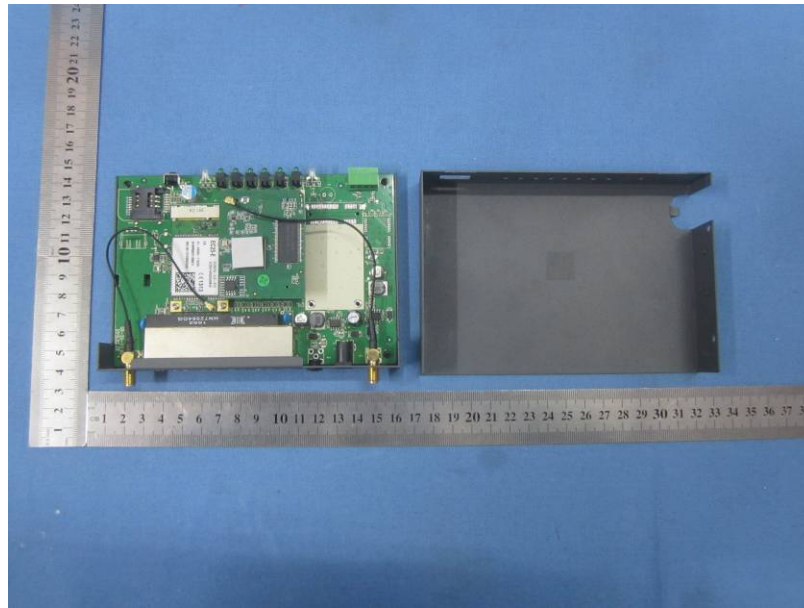


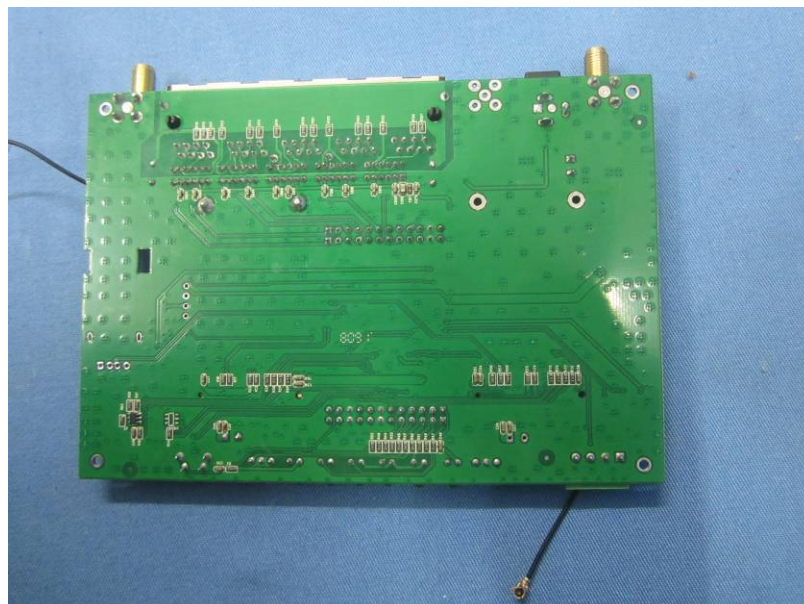
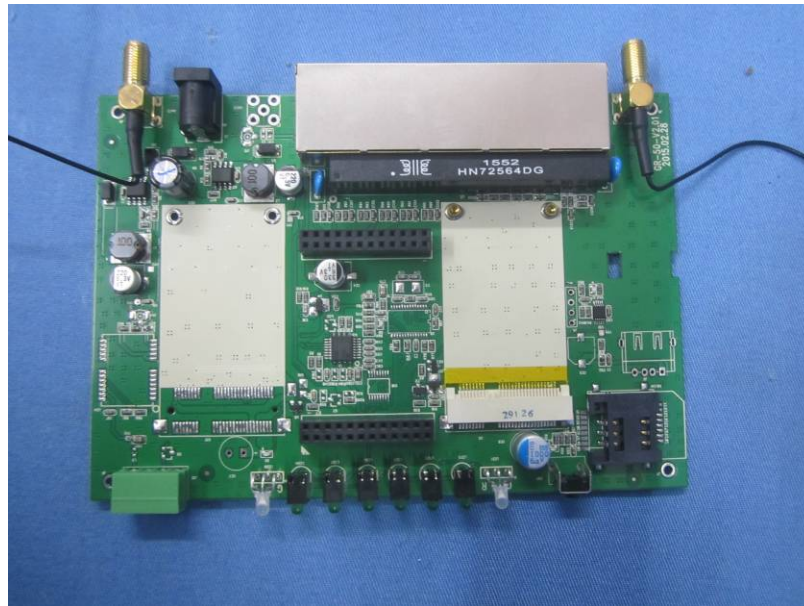




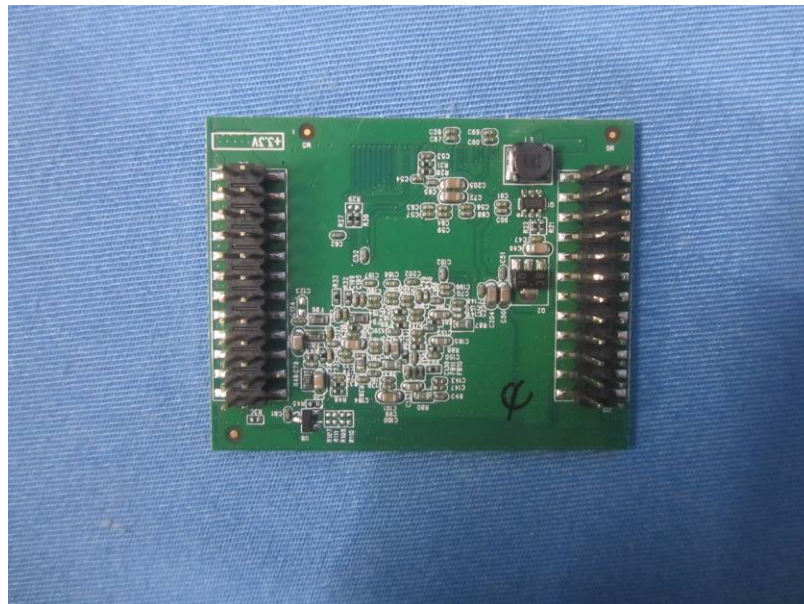
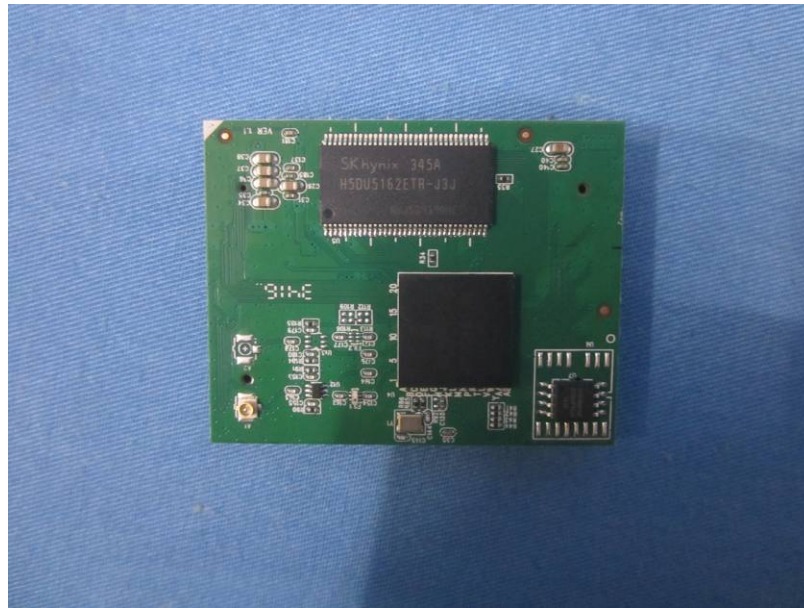
















-----End-----