

WLINK R-Series 4G Industrial Router

Quick Start Guide

Date: 2025-01-23

Rev. WLINK G-Series 5G Industrial Router QSG v1.0



WL-G230



WL-G530



WL-G930



WL-G525



WL-G535

1. Package Contents

When we open the package, look for the following:



1 x Router



1 x Power Adapter*



1 x Power Adapter



4 x 5G Antennas*



2(4) x WiFi Antennas*



1 x GPS Antenna*

- * We will provide corresponding plug for different countries and regions
- * 5G MIMO requires four antennas
- * WiFi function (and 4 antennas) is optional
- * GPS function is optional

2. Hardware Setup

2.1 Attach the Antennas

The following steps are based on the WL-G930-NQ-g as an example, other models are also applicable.

- Screw the 5G antennas onto the connectors.
- Screw the GPS antenna (if optional) onto the **GPS** connector, and place it near a window or outdoors.



- Screw the WIFI antennas onto the **WiFi 1-4**(optional) connectors.

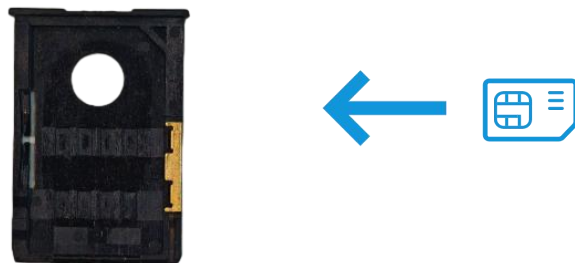


2.2 Insert the SIM card

- Take the SIM card box out of the router



- Insert the SIM* card (2FF) into the card slot with the metal contacts facing upwards.



2.3 Connect the Power

- Connect the power adapter to the router and plug it into a power outlet, the PWR LED will light up.



2.4 Connect to the Router

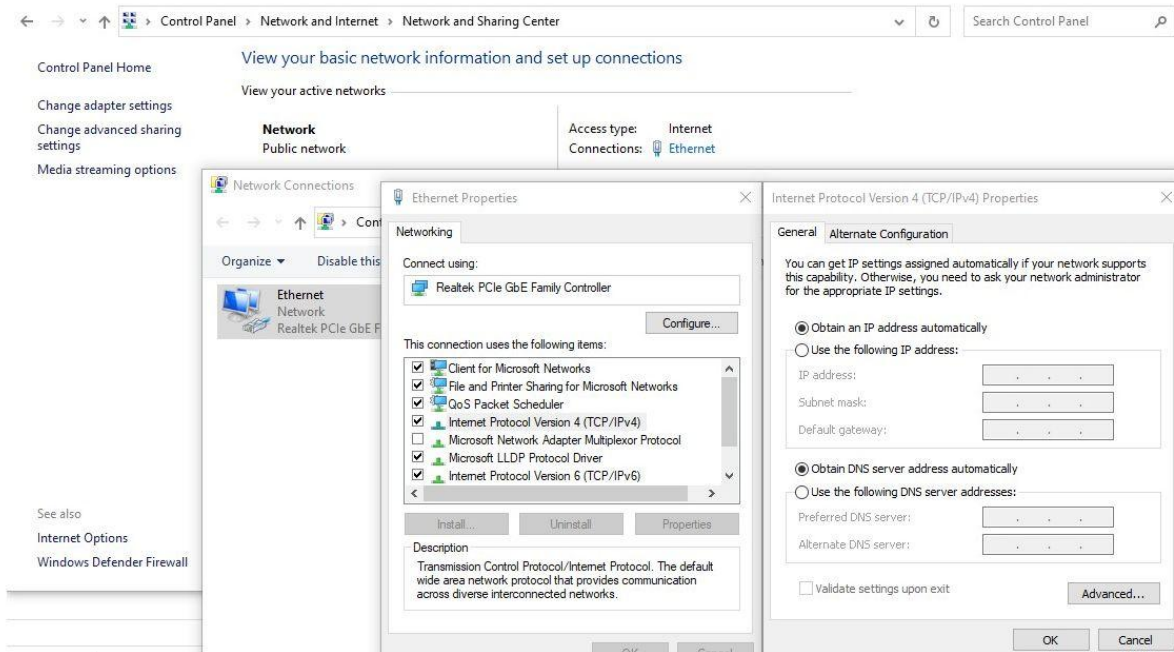
- Use an Ethernet cable to connect PC to the router(LAN port).



3. Network Configuration

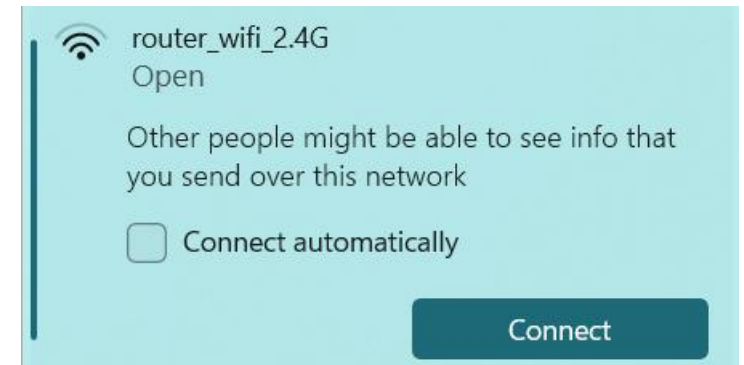
3.1 Access the Router GUI

- Check if the IP address and DNS are automatically obtained. Right-click the wireless network adapter and select Properties. Then select Internet Protocol Version 4 and click Properties.



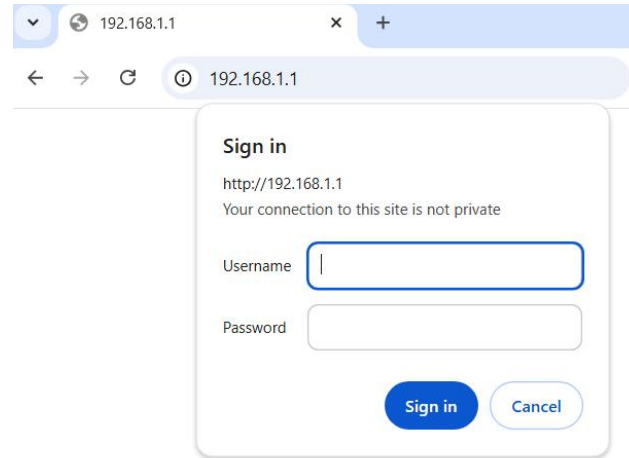
- If not selected, check to Automatically Obtain IP Address and Automatically Obtain DNS server address. Click OK.

- Or connect via WiFi* (Windows), check if WIFI Ethernet is enabled and connect to the default SSID: **router_wifi**

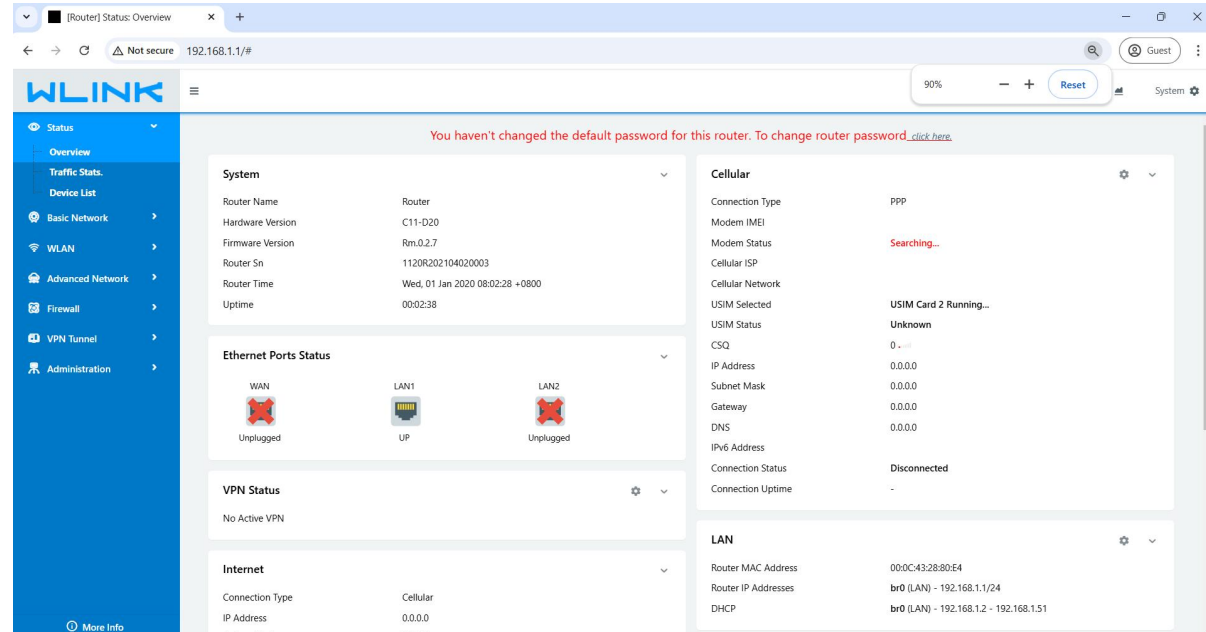


* WL-R100 does not support WiFi, other models can be optional

- Open a web browser, enter the default IP address **192.168.1.1** of the router in the address bar.

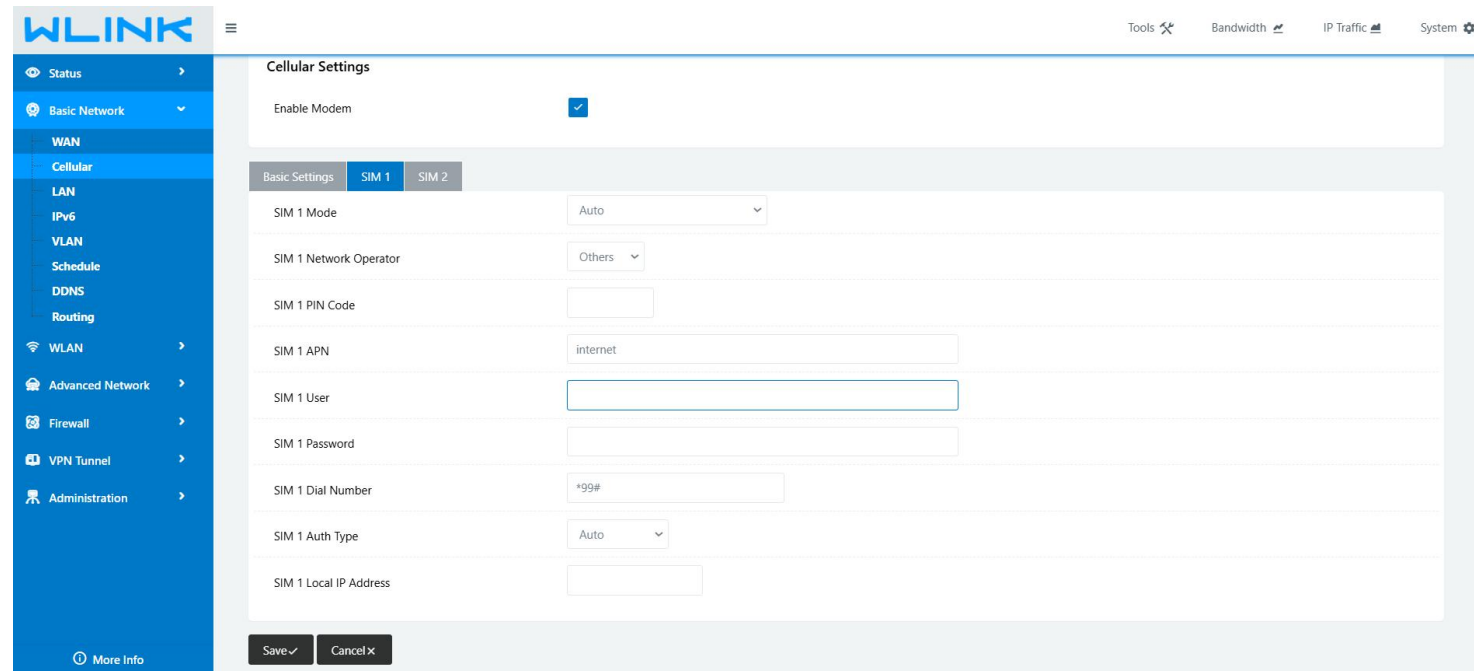


- Use the default username and password **admin/admin** to log in to the GUI

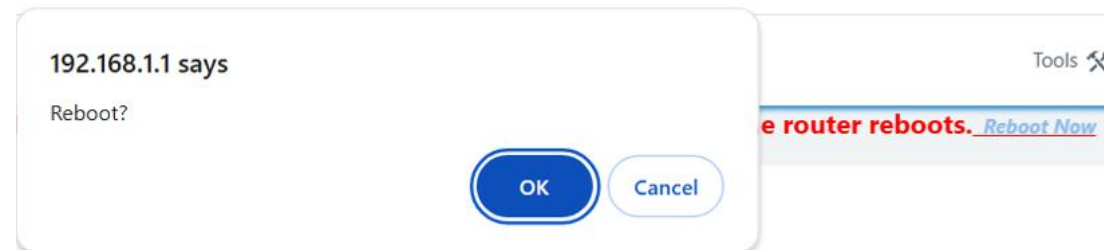


3.1 Configure the Cellular Connection

- Navigate to the **GUI > Basic Network > Cellular > SIM1** (or SIM2), enter the APN (or other parameters if any) provided by SIM network operator.



- After modifying the parameters, click **Save** and **Reboot** the router.



The screenshot shows the WLINK GUI Status Overview page. The 'Cellular' section is highlighted, showing the following details:

- Connection Type: ECM/GM
- Modem IMEI: 865847055242851
- Modem Status: Ready
- Cellular ISP: "CHINA MOBILE"
- Cellular Network: 4G
- USIM Selected: USIM Card 1 Running...
- USIM Status: Ready
- CSQ: 16
- IP Address: 10.193.178.39
- Subnet Mask: 255.255.255.240
- Gateway: 10.193.178.40
- DNS: 120.196.165.7, 221.179.38.7
- IPv6 Address: Connected
- Connection Status: 000335
- Connection Uptime: 000335

- After restarting, back to **GUI > Status > Overview** and we will view the status of cellular.

The screenshot shows the WLINK GUI Tools Ping page. The 'Tools' menu is open, and the 'Ping' option is selected. The configuration is as follows:

- IP Address: 8.8.8.8
- Ping Count: 5
- Packet Size: 56 (bytes)

The results table is as follows:

Seq	Address	RX Bytes	TTL	RTT (ms)	+/- (ms)
0	8.8.8.8 (8.8.8.8)	64	50	216.35	
1	8.8.8.8 (8.8.8.8)	64	50	73.60	-142.75
2	8.8.8.8 (8.8.8.8)	64	50	80.28	6.68
3	8.8.8.8 (8.8.8.8)	64	50	87.98	7.70
4	8.8.8.8 (8.8.8.8)	64	50	87.87	-0.11

Summary: Round-Trip: 73.598 min, 109.215 avg., 216.355 max
Packets: 5 transmitted, 5 received, 0% lost

- We can click the **Tools > Ping** in the upper right corner to do a network connectivity test.

4. Troubleshooting

- **No SIM Card Detected:** Ensure the SIM(2FF) card is correctly inserted into the slot with gold contacts facing down and the cut corner facing out.
 - **No Network Connection:** Verify the APN settings and ensure the SIM data plan is active.
 - **Weak Signal:** Check the RF signal value in the log, if the CSQ is less than 12, move the router to a location with better signal reception or adjust the antenna position.
-

5. Support

- **User Manual:** For a more detailed instruction of the features and configuration examples, please refer to the User Manual.
- **Contact Us:** For further assistance, please contact our technical support team (mail to: support@wlink-tech.com).
- **More Product Information:** Please visit our official website: <https://www.wlink-tech.com/>