

WLINK[®]

WL-R130 4G Router

Industrial 4G LTE Cat4/Cat6 Router

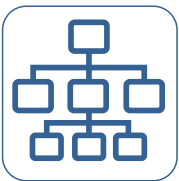


The WLINK R130 is a compact yet powerful 4G gateway cellular router, designed for seamless integration into systems by users and system integrators. It is ideal for a wide range of M2M and (Industrial) IoT applications, particularly in scenarios where installation space is limited, such as metering, traffic systems, military, homeland security, and emergency response.

Engineered to meet diverse interface requirements, the R130 features 1x LAN, 1x RS232, and 1x RS485 ports. Built with a state-of-the-art CPU processor, a ruggedized enclosure, and robust internal components, it is designed to withstand extreme temperatures, dust, and moisture. The terminal block ensures a secure power supply, delivering unmatched reliability and efficiency in even the most demanding environments.

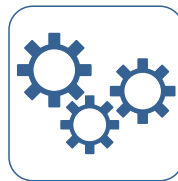
Powered by an embedded Linux operating system, the R130 offers a rich suite of software features. Beyond being a router, it functions as a multi-functional device, serving as a DTU (Data Terminal Unit) or RTU (Remote Terminal Unit) to meet your industrial needs. With optional GPS capability, it becomes an ideal solution for IP cameras, fleet tracking, and access management applications.

Additionally, the R130 supports eSIM technology, enabling effortless switching between carriers for greater flexibility and convenience.



Easy to integrate, deploy or mount

Designed for flexibility, R130 supports multiple mounting options, including DIN rail, rack, and desktop configurations. Whether for industrial setups or compact spaces, it seamlessly adapts to your project needs, ensuring quick and hassle-free installation.



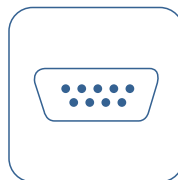
High performance, Industrial-Grade Design

Fan-free design, robust housing, and an impressive operating temperature range of -40°C to 70°C . It excels in resilience, withstanding strong electromagnetic interference and offering dual power supplies for redundancy. Its isolated input and wide voltage range ensure reliable performance in even the toughest conditions.



Secure and Reliable Network

Advanced security features, including support for multiple VPN protocols such as IPSec, OpenVPN, DMVPN, WireGuard, ZeroTier, GRE, PPTP, and L2TP. It also incorporates NAT, port forwarding, a stateful firewall, and packet filtering to safeguard your network. With data encryption, Access Control Lists (ACL), and robust access controls.



Serial Communication

The R130 is equipped with RS232 and RS485 interfaces, making it an ideal solution for seamless serial communication with meters, sensors, and controllers. It supports advanced features such as Serial-to-IP conversion, Modbus RTU/TCP protocol, and MQTT protocol uploading.



Support for Various Network Protocols

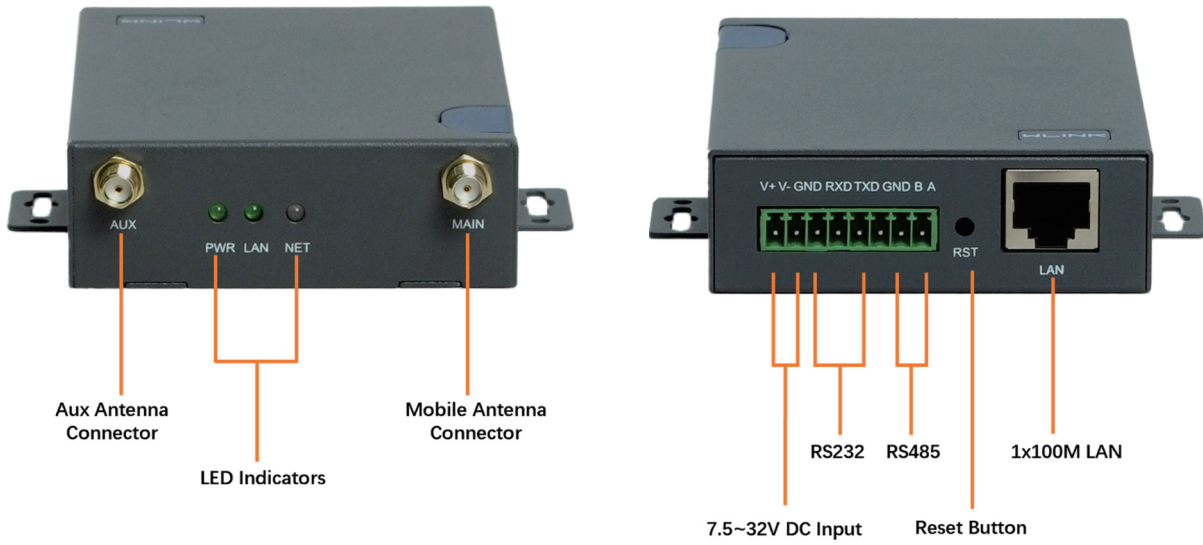
Compatible with a wide range of protocols, including Modbus RTU/TCP, HTTPS, MQTT, TR-069, SNMPv3, and IPv6. This versatility ensures seamless integration into diverse network environments, meeting the unique demands of your applications.



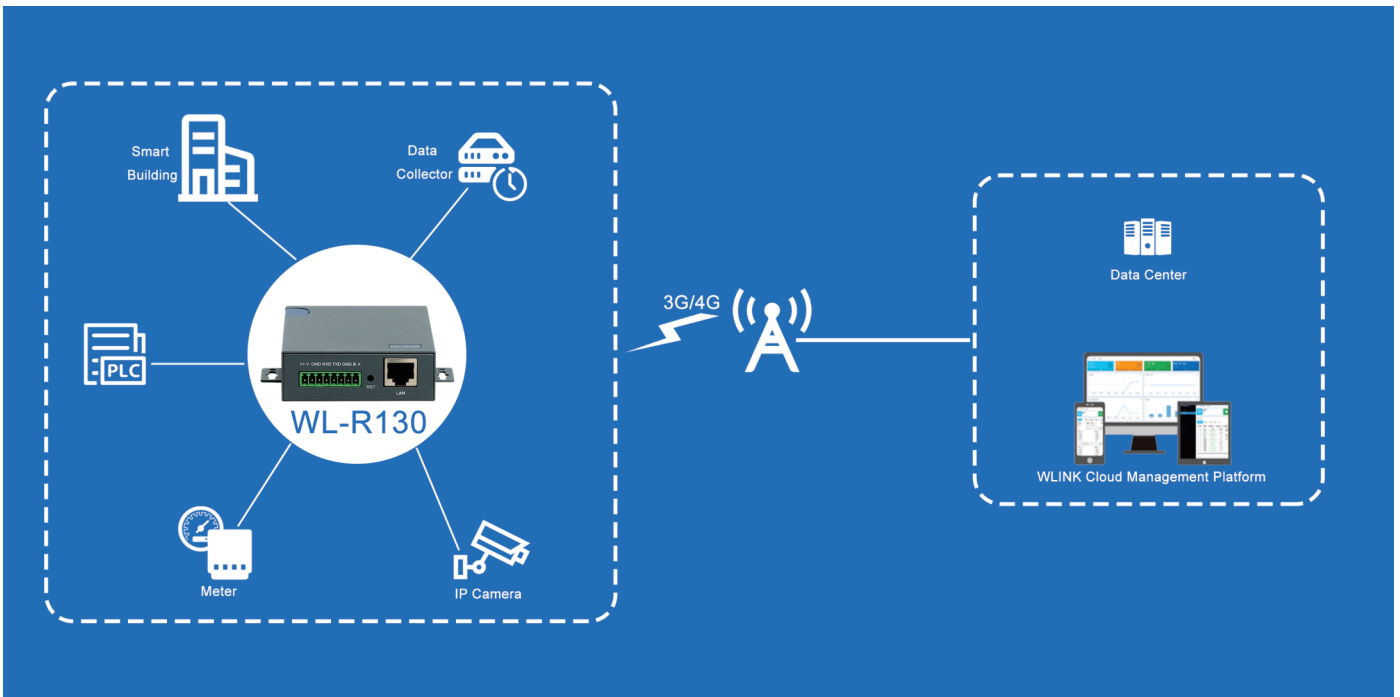
Optional eSIM for Enhanced Flexibility

With optional eSIM support, R130 offers the freedom to switch carriers effortlessly. This feature provides greater flexibility and convenience, making it an ideal choice for global deployments.

Interface Diagram



Typical Application



Specification

Physical			
Network	5G RedCap/LTE-A/LTE/LTE CAT1 HSPA/WCDMA/UMTS EDGE/GPRS	Hardware System	MIPS 580MHz CPU 128Mb Flash 512Mb DDR2 RAM Hardware Watchdog eSIM Optional
Interface	2x SIM Slots 1x 10/100M Ethernet Port 1x RS232(TTL Optional), 1x RS485 1x DC (2 Pins plugs) 2x SMA-K(Female) 4G Antenna 1x Reset	GPS(Optional)	GPS Sensitivity: -160dBm GPS Accuracy: 2.5m CEP Update Rate: 1Hz@5Hz Time to First Fix: Cold Status 27s, Hot status 1s. Protocol: NMEA-0183 2.3V
LED Indicators	PWR LAN NET	Wi-Fi(Optional)	IEEE 802.11 b/g/n 150Mbps(1T1R) Output Power 11n HT40 MCS7: 15dBm, 11b CCK: 18dBm, 11g OFDM: 15dBm Sensitivity 300Mbps: -65dBm 54Mbps: -73dBm 11Mbps: -86dBm
Consumption	Voltage: DC +7.5~32V (standard 12V/1A power adapter) SIM/R-UIM Card: 1.8V/3V Idle: 110mAh+12VDC Online: 170mAh+12VDC	Other	Galvanized metal with grounding Screw Dimension: 103mm x 73.5mm x 25.5mm (not including antenna) Weight: 225g (not including accessories) Operating temperature: -30°C to +75°C Storage temperature: -40~+85°C Relative humidity: 0~95% (non-condensing) Guarantee: two years
Compliance	FCC CE RoHS CCC	Package Content	1x WL-R130 Router 2x 4G Magnetic antenna 1x Ethernet Cable 1x Power Supply Adapter 1x DIN Rail Mount Kits
Software			
Operating System	WLINK OS based Linux	Firewall	SNAT/DMZ Port Forwarding IP Filter Mac Filter Key Word Filter Domain Name Filter
Network Protocol	IPv4/v6, PPPoE, UDP, TCP, ICMP, NTP, DHCP, Modbus, HTTP/HTTPS, UPNP, SNMPv3, TR069, DDNS, Telnet/SSH, MQTT	Network Monitoring	Ethernet Ports Status ICMP Check Traceroute Data Capture Bandwidth Graph Data Traffic Graph System Debugging Log
VPN	CRE Tunnel Zerotier VPN Wireguard VPN Client and Sever supported OpenVPN: TLS1.2, Encryption as DES, RC2, BF, 3DES, CAST5, AES, SEED 45 encryption methods PPTP/L2TP: Client mode, L2TPv3 supported IPsec: GRE Over IPsec, L2TP over IPsec, Two tunnels Failover, IKEv1, IKEv2, DES, 3DES, AES128, AES192, AES256 multiple encryption methods supported. DMVPN: mGRE, NHRP, IPsec	Network Features	Dual-SIM Failover WAN/4G Failover Serial Port Client/Server Applications AT command over IP VRRP VLAN IP Passthrough Bandwidth Management Static Routing/Policy Routing RIPV2/OSPF/BGP Dynamic Routing
Router Management	Local/Remote GUI Telnet/SSH SNMP v3/TR069 WLINK M2M Management Platform	WLAN Mode	IEEE 802.11b/g/n, AP, Wireless Client and Ethernet Bridge modes Wi-Fi users: up to 128 simultaneous connections Wi-Fi Hotspot Wireless Black/White List Multi-SSID WPA Personal WPA2 Personal WPA/WPA2 Personal AES, TKIP, Auto Cipher modes

Ordering Information

Partial Order Number List

Part No.	4G/4G+	3G	SIM	Category	DL	UL	WiFi	Region	GPS/GNSS
WL-R130-LA	FDD-LTE: B1/B3/B5/B7/B8/B20/B28 TDD-LTE: B38/40/41	B1/B5/B8	Two	Cat4	150M	50M	/	Asia Europe Africa	
WL-R130-LA-w							802.11b/g/n		
WL-R130-LA-g							/		√
WL-R130-LFX	FDD-LTE: B1/B3/B7/B8/B20/B28A TDD-LTE: B38/40/41	B1/B8	Two	Cat4	150M	50M	/	Asia Europe Africa	
WL-R130-LFX-w							802.11b/g/n		
WL-R130-LFX-g							/		√
WL-R130-LA1	FDD-LTE: B1/B2/B3/B4/B5/B7/B8 /B28/B66 TDD-LTE: B40	B1/B2/B4B5/B8	Two	Cat4	150M	50M	/	Australia Latin America	
WL-R130-LA1-w							802.11b/g/n		
WL-R130-LA1-g							/		√
WL-R130-LF1	FDD-LTE: B1/B2/B3/B4/B5/B7/B8/ B28 TDD-LTE: B40	B1/B2/B5/B8	Two	Cat4	150M	50M	/	Australia Latin America	
WL-R130-LF1-w							802.11b/g/n		
WL-R130-LF1-g							/		√
WL-R130-LF2	FDD-LTE: B2/B4/B5/B12/B13/B14/ B66/B71	B2/B4/B5	Two	Cat4	150M	50M	/	North America FirstNet	
WL-R130-LF2-w							802.11b/g/n		
WL-R130-LF2-g							/		√
WL-R130-LF3	FDD-LTE B2/B4/B5/B12/B17	B1/B6/B8/B19	Two	Cat4	150M	50M	/	Japan	
WL-R130-LF3-w							802.11b/g/n		
WL-R130-LF3-g							/		√
WL-R130-LG	FDD-LTE: B1/2/3/4/5/7/8/ 12/13/18/19/20/25/26/28 LTE-TDD: B38/39/40/41	B1/B2/B4/B5/ B6/B8/B19	Two	Cat4	150M	50M	/	Global	
WL-R130-LG-w							802.11b/g/n		
WL-R130-LG-g							/		√
WL-R130-LF6	FDD-LTE: B1/B3/B5/B7/B8/B20/B28/ B32 TDD-LTD: B38/ B40 /B41	B1/B3/B5/B8	Two	Cat6	300M	50M	/	Asia Europe Africa Australia	
WL-R130-LF6-w							802.11b/g/n		
WL-R130-LF6-g							/		√
WL-R130-LF7	FDD-LTE: B2/B4/B5/B7/B12/B13/ B17/B25/B26/B29/B30/ B66 TDD-LTD: B40	B2/B4/B5	Two	Cat6	300M	50M	/	America	
WL-R130-LF7-w							802.11b/g/n		
WL-R130-LF7-g							/		√

Note:

1. If request other frequency band model, please consult wink sale person or local distributor.
2. Please consult WLINK or local distributor if request GPS or Storage.
3. Please consult WLINK or local distributor if request special features
4. The above list only includes partial available models, please consult wink sale person if can't find a suitable one.

Shenzhen Wlink Technology Co., LTD

Add: 2A, Building F5, TCL International E-city, Zhongshanyuan Rd. Nanshan, Shenzhen, China

Tel: 86-755-86089513

Web: www.wlink-tech.com