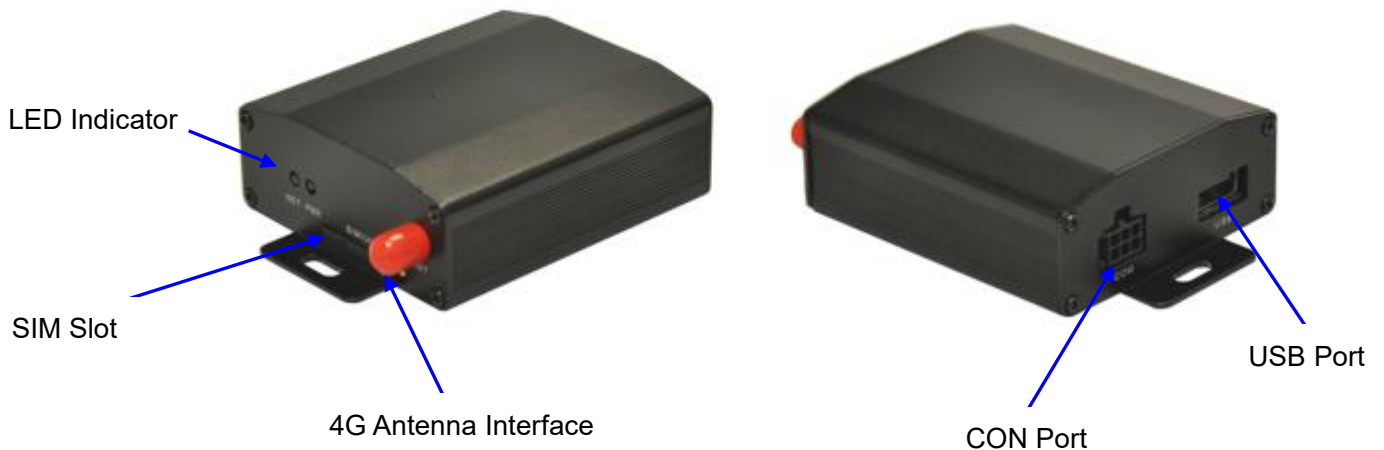


# WL-M303 USB Modem Quickstart

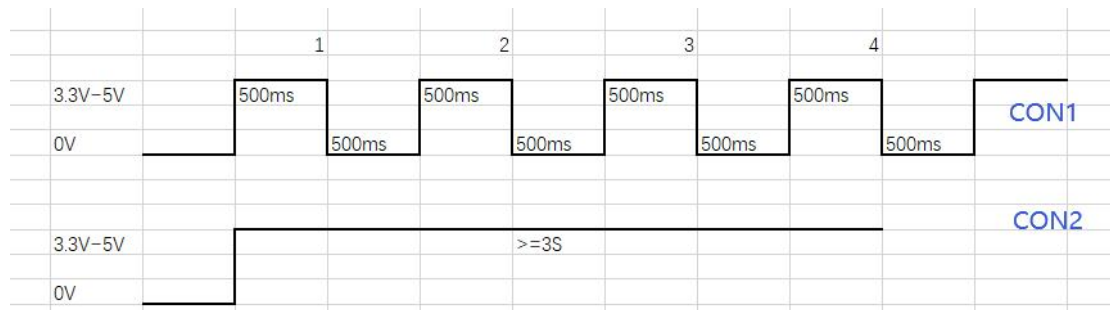
## 1. WL-M303 Modem interface Indication



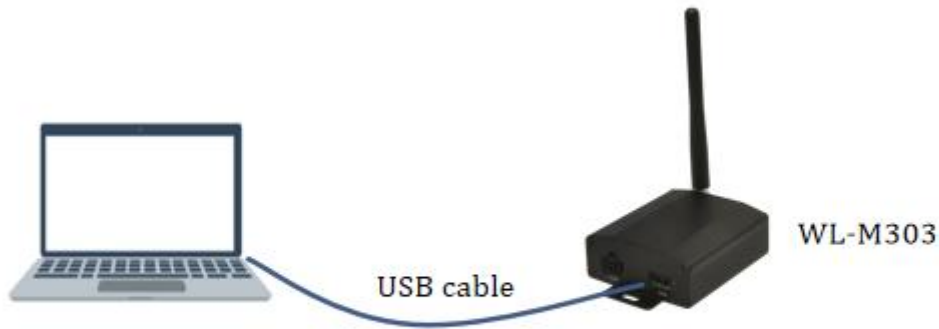
### CON Interface Instruction

NO.	PIN	Description	Icon
1	CON1	Input 1, check pulse signal (pulse width for 1second) to reset modem.	
2	CON2	Input 2, High level input(5~12V) and time more than 3s to reset modem.	
3	USB+	USB Data Pin	
4	USB-	USB Data Pin	
5	VIN+	Power (5~26V DC)	
6	GND	GND	

### Reset modem from CON1 Signal






## 2. Connect the Modem to PC

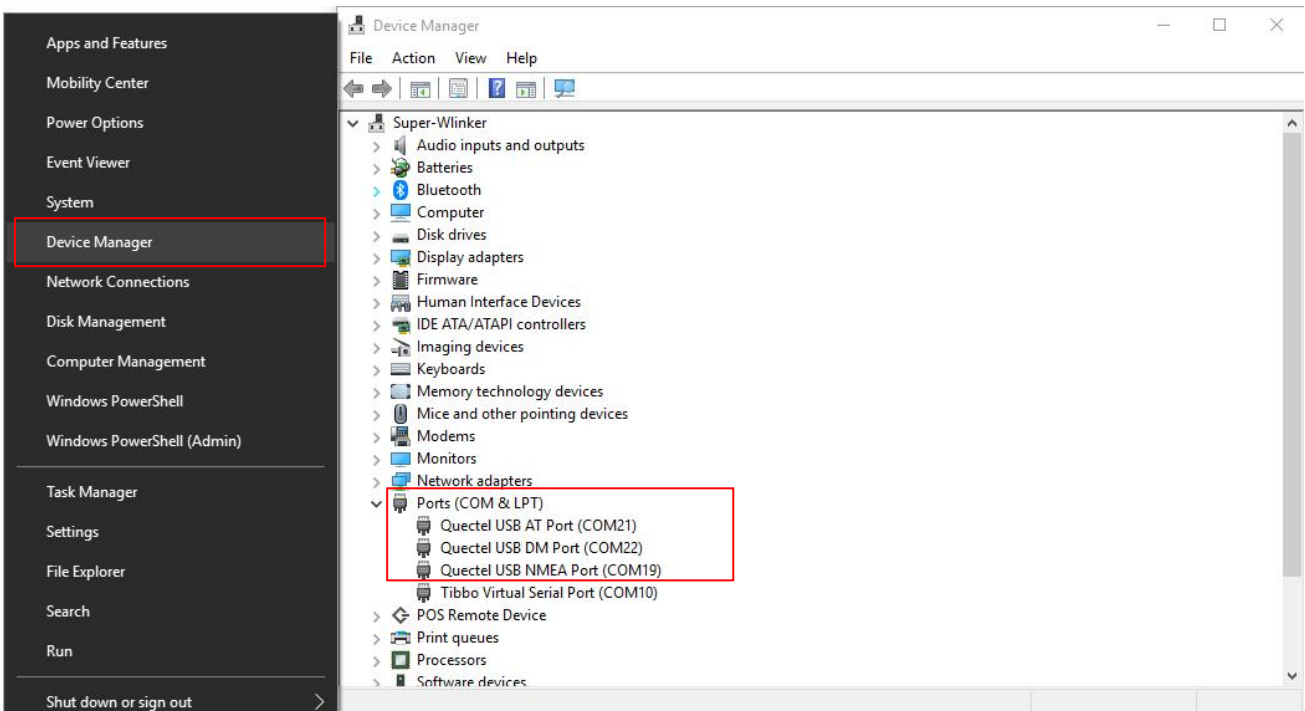


### 3. Install modem driver *(WL-M303 4G modem as example)*

WL-M303-6 is built-in Quectel 4G module. WIN OS(Windows 7 or above) will automatically check and install the 4G module, then 4G interface will be displayed in Device manager. For other WIN OS version, it is necessary to be installed driver by manual as below.

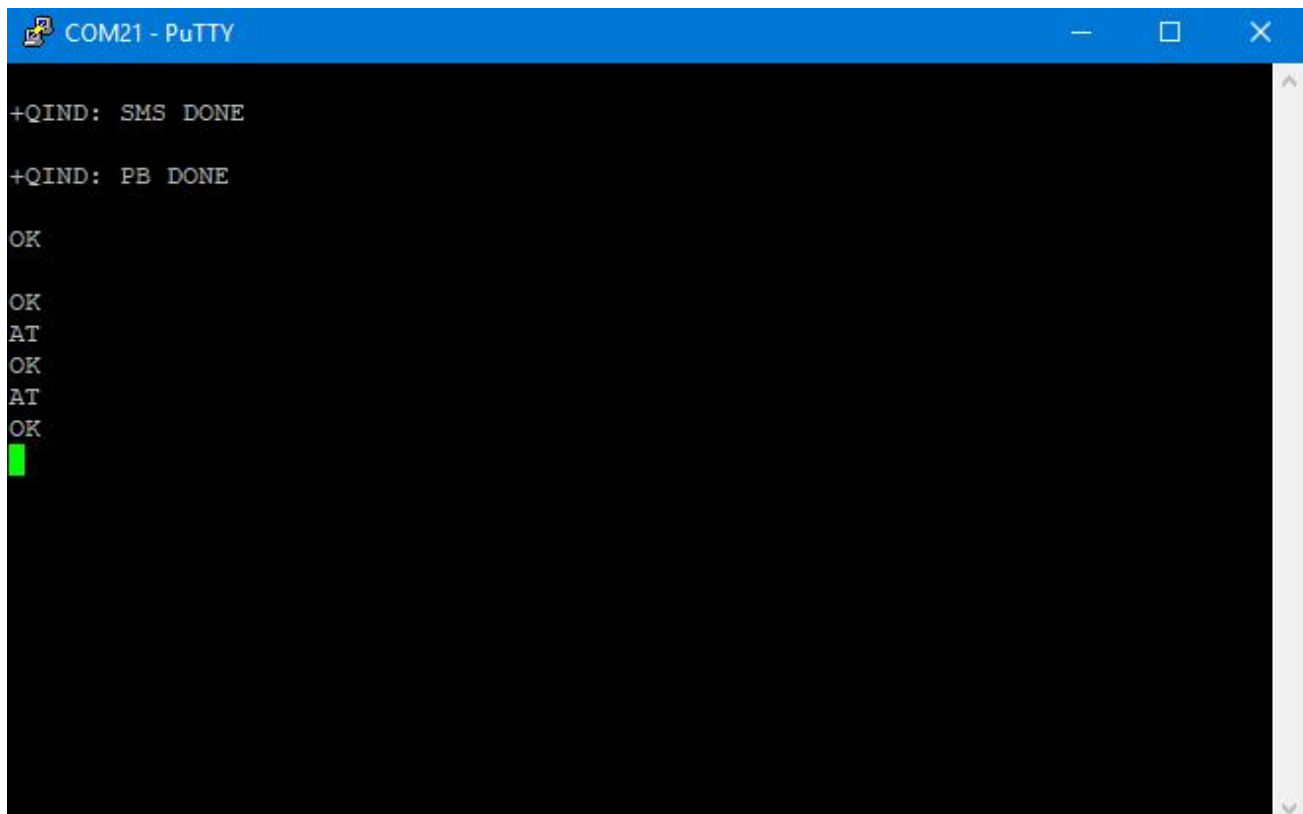
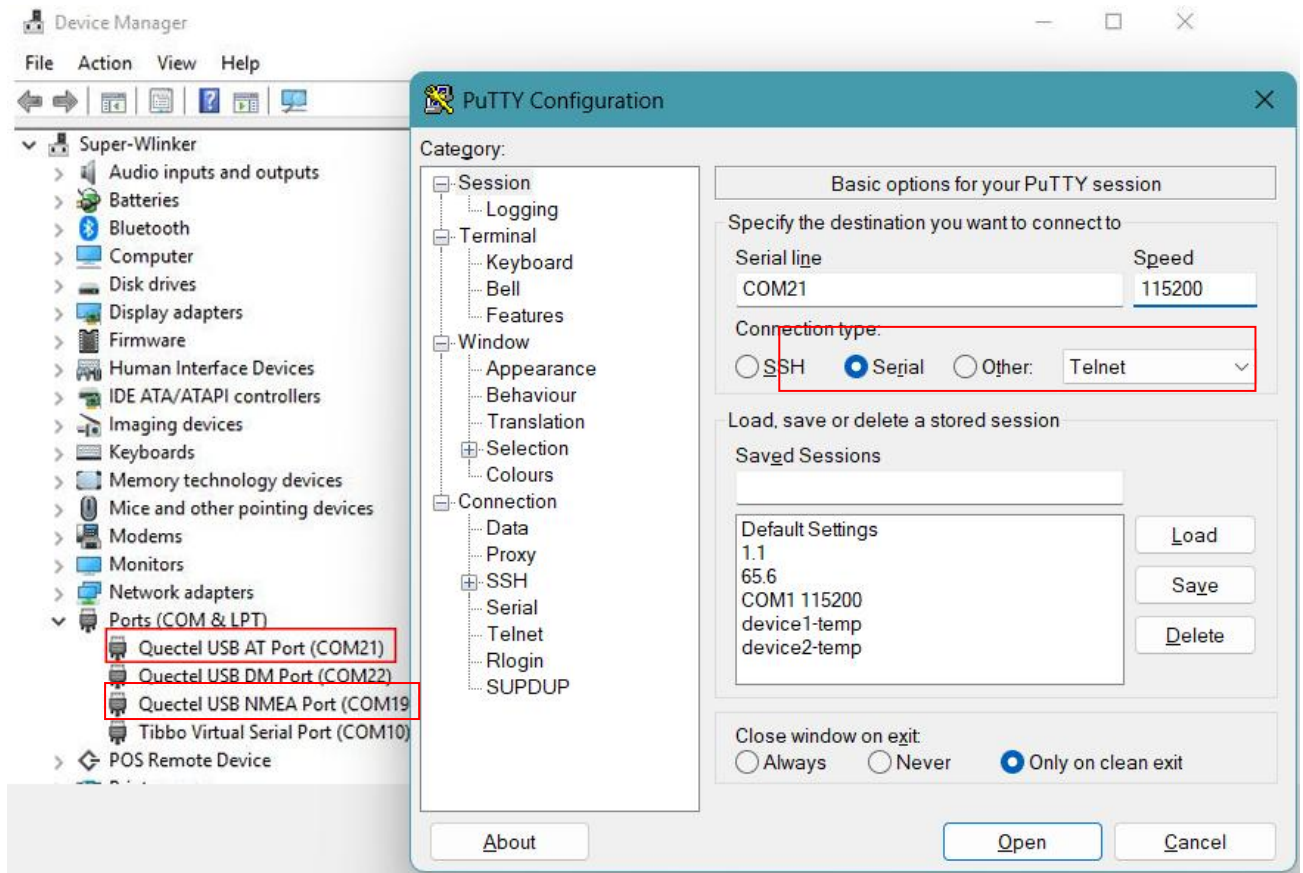
-  Quectel\_LTE&5G\_Windows\_USB\_Driver\_V2.2.2
-  Quectel\_EC2x&EG9x&EG2x-G&EM05\_Series\_AT\_Commands\_Manual\_V2.0.pdf
-  Quectel\_RG50xQ&RM5xxQ\_Series\_AT\_Commands\_Manual\_V1.1.pdf

### 4. Check the Modem Ports with Device Manager



### 5. Test modem via AT commands

Choose AT port and implement AT command in PuTTY (serial port tool). If AT command responds normally, it means modem is working in current WIN OS.



## 6. Dial-up

Check local network connection icon in the lower right corner of toolbar in the PC (Windows 7 or above), and choose "Cellular" to dial up as following. It will display connected when dial up successfully.

